



9am



10am



11am



12pm



1pm



2pm



3pm

SOLAR ACCESS STUDY C.O.S WEST  
WINTER SOLSTICE

X	09.02.18	FOR APPROVAL	djm	ADM
ISSUE	DATE	DESCRIPTION	initials	chkd
sign			date	
These drawings are not to be scaled. Figured dimensions shall be used in all cases.				

COPYRIGHT - These drawings remain the exclusive copyright of ADM Architects. Reproductions in any form whether electronic, digital or otherwise shall not be allowed except by express permission granted in writing by ADM Architects.

FIGURED DIMENSIONS - These drawings are not to be scaled. Figured dimensions shall be used in all cases.

DISCREPANCIES IN DIMENSIONS/POSITIONS/LOCATIONS/FINISHES The Contractor is to verify any dimensional, location or finish discrepancy with ADM Architects prior to any physical construction or setting out so that ADM Architects is given the opportunity to resolve potential discrepancies or conflicts in sufficient time without causing abortive work. The Contractor shall be responsible for notifying ADM Architects of any such discrepancy or conflict that may arise on site.

COORDINATION OF WORKS - These drawings are to be read in conjunction with the full set of consultant's drawings, specifications, reports and DA conditions.

NOMINATED ARCHITECT - The nominated Architect for ADM Projects (Australia) Pty Ltd T/as ADM Architects is Angelo Di Martino AIBB No.7608

94 Kembla St Wollongong NSW 2500 PO Box 3061 Wollongong  
ph: 02 4228 6400 fax: 02 4228 6455 www.admarchitects.com.au

**NICOLAS  
DAOUD &  
CO PTY. Ltd**

Project  
DEMOLITION OF EXISTING STRUCTURES AND CONSTRUCTION  
OF A MIXED USE DEVELOPMENT COMPRISING RESIDENTIAL  
APARTMENTS ABOVE RETAIL SHOPS, COMMERCIAL TENANCIES  
AND ASSOCIATED CARPARKING AREAS  
at  
LOT 1, DP50193, LOT 3, DPI104857, PT.1, DP506764, LOTS 100 & 200,  
DPI017091,  
AKUNA & TERRALONG STREET  
KIAMA

scale	NTS	
date	FEBRUARY 2018	
drawn	djm SJ chkd ADM	
drawing	DEVELOPMENT APPLICATION	
SOLAR ACCESS STUDY 2 of 3		
Project No.	Drawing No.	issue
2016-19(a)	A-403	X

NOT FOR CONSTRUCTION





9am



10am



11am



12pm



1pm



2pm



3pm

SOLAR ACCESS STUDY C.O.S BLOCK D & E  
WINTER SOLSTICE

X	09.02.18	FOR APPROVAL	djm	ADM
ISSUE	DATE	DESCRIPTION	initials	chkd
sign			date	
These drawings are not to be scaled. Figured dimensions shall be used in all cases.				

COPYRIGHT - These drawings remain the exclusive copyright of ADM Architects. Reproductions in any form whether electronic, digital or otherwise shall not be allowed except by express permission granted in writing by ADM Architects.

FIGURED DIMENSIONS - These drawings are not to be scaled. Figured dimensions shall be used in all cases.

DISCREPANCIES IN DIMENSIONS/POSITIONS/LOCATIONS/FINISHES The Contractor is to verify any dimensional, location or finish discrepancy with ADM Architects prior to any physical construction or setting out so that ADM Architects is given the opportunity to resolve potential discrepancies or conflicts in sufficient time without causing abortive work. The Contractor shall be responsible for notifying ADM Architects of any such discrepancy or conflict that may arise on site.

COORDINATION OF WORKS - These drawings are to be read in conjunction with the full set of consultant's drawings, specifications, reports and DA conditions.

NOMINATED ARCHITECT - The nominated Architect for ADM Projects (Australia) Pty Ltd T/A ADM Architects is Angelo Di Martino AIB No.7608

94 Kembla St Wollongong NSW 2500 PO Box 3041 Wollongong  
ph: 02 4228 6400 fax: 02 4228 6955 www.admarchitects.com.au

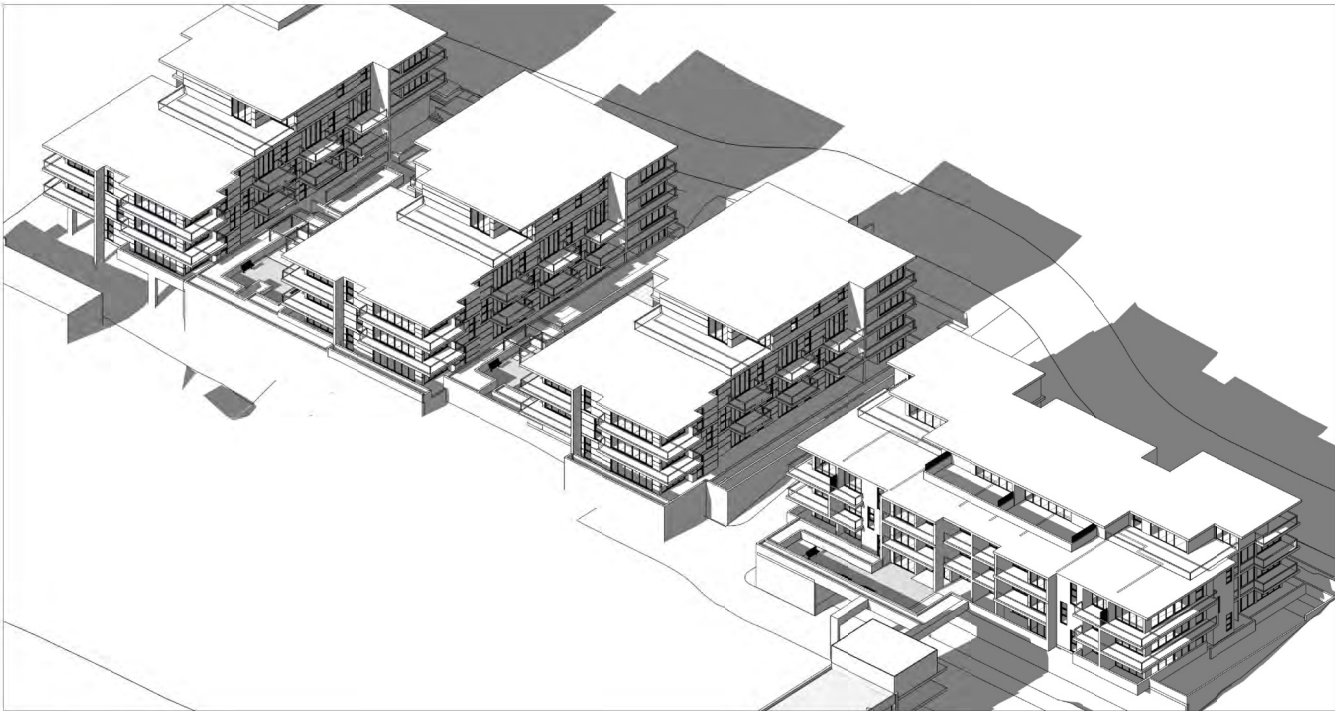
**NICOLAS  
DAOUD &  
CO PTY. Ltd**

Project  
DEMOLITION OF EXISTING STRUCTURES AND CONSTRUCTION  
OF A MIXED USE DEVELOPMENT COMPRISING RESIDENTIAL  
APARTMENTS ABOVE RETAIL SHOPS, COMMERCIAL TENANCIES  
AND ASSOCIATED CARPARKING AREAS  
at  
LOT 1, DP50193, LOT 3, DPI104857, PT.1, DP506764, LOTS 100 & 200,  
DPI017091,  
AKUNA & TERRALONG STREET  
KIAMA

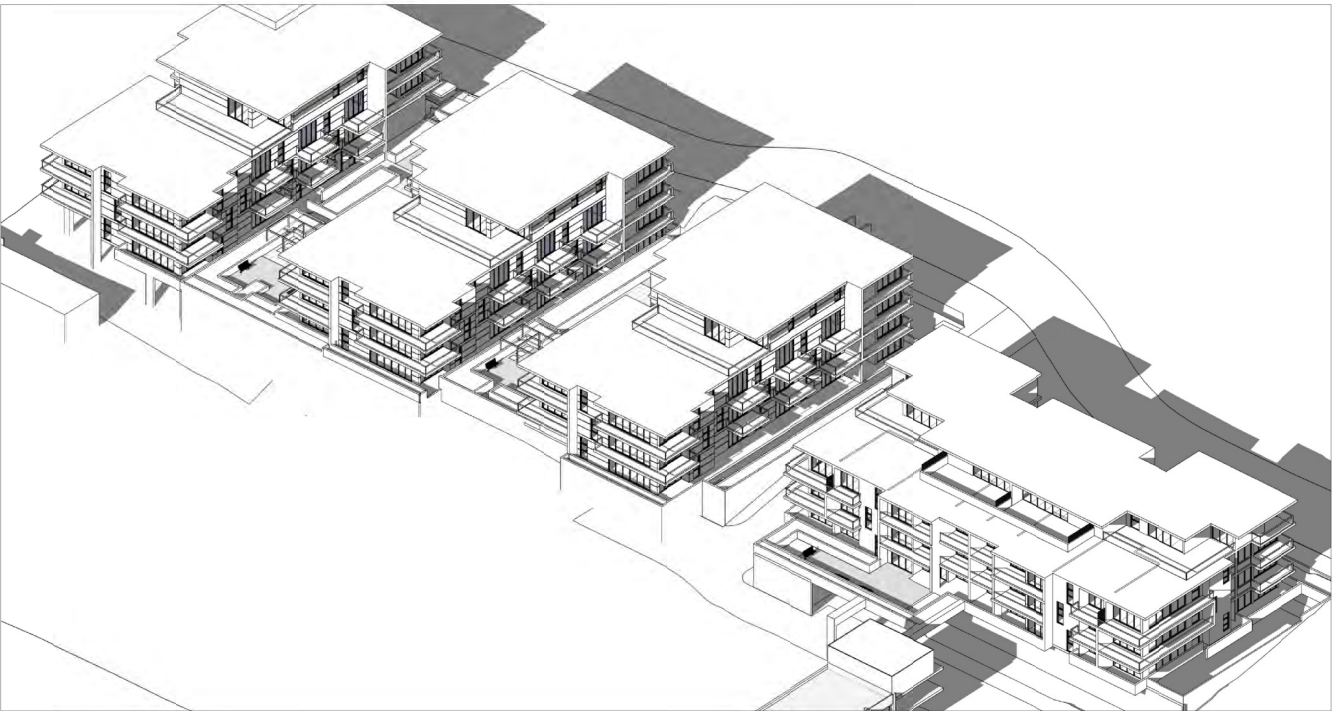
scale	NTS
date	FEBRUARY 2018
drawn	djm SJ chkd ADM
drawing	DEVELOPMENT APPLICATION
Project No.	SOLAR ACCESSSTUDY 3 of 3
2016-19(a)	2016-19(a)
Drawing No.	A-404
issue	X

NOT FOR CONSTRUCTION

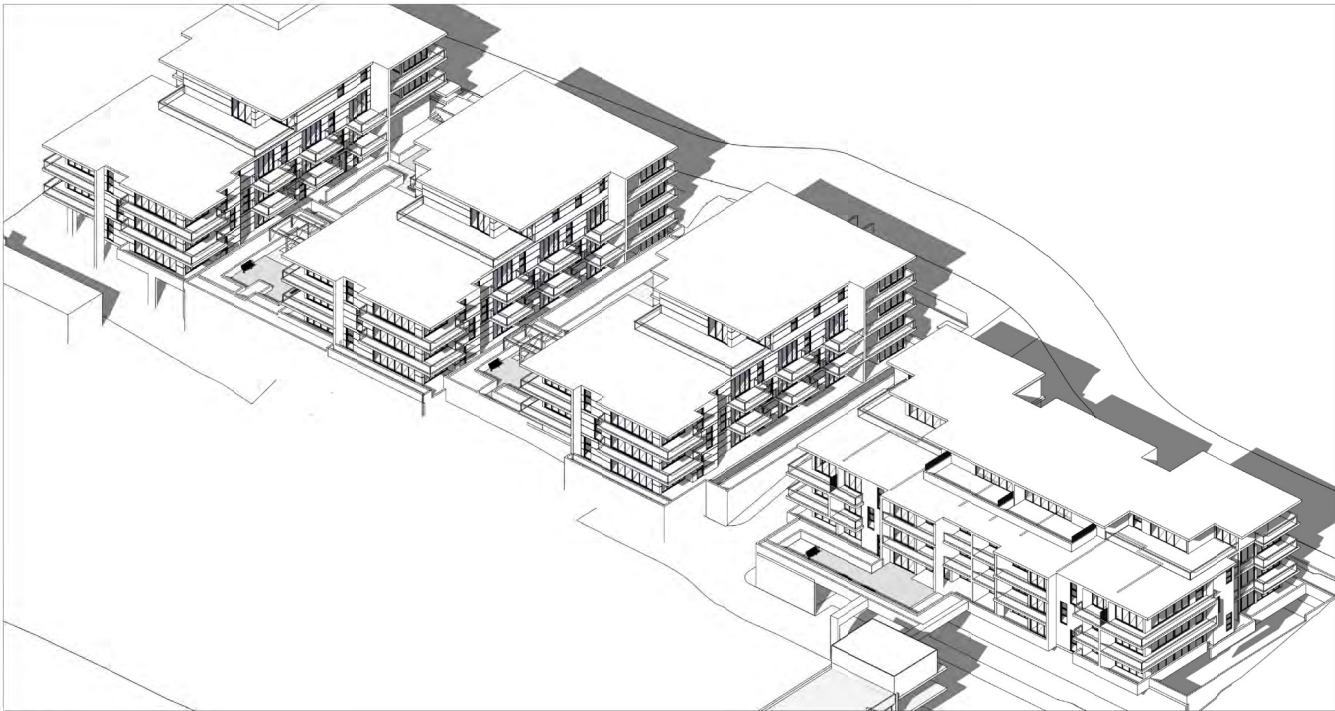




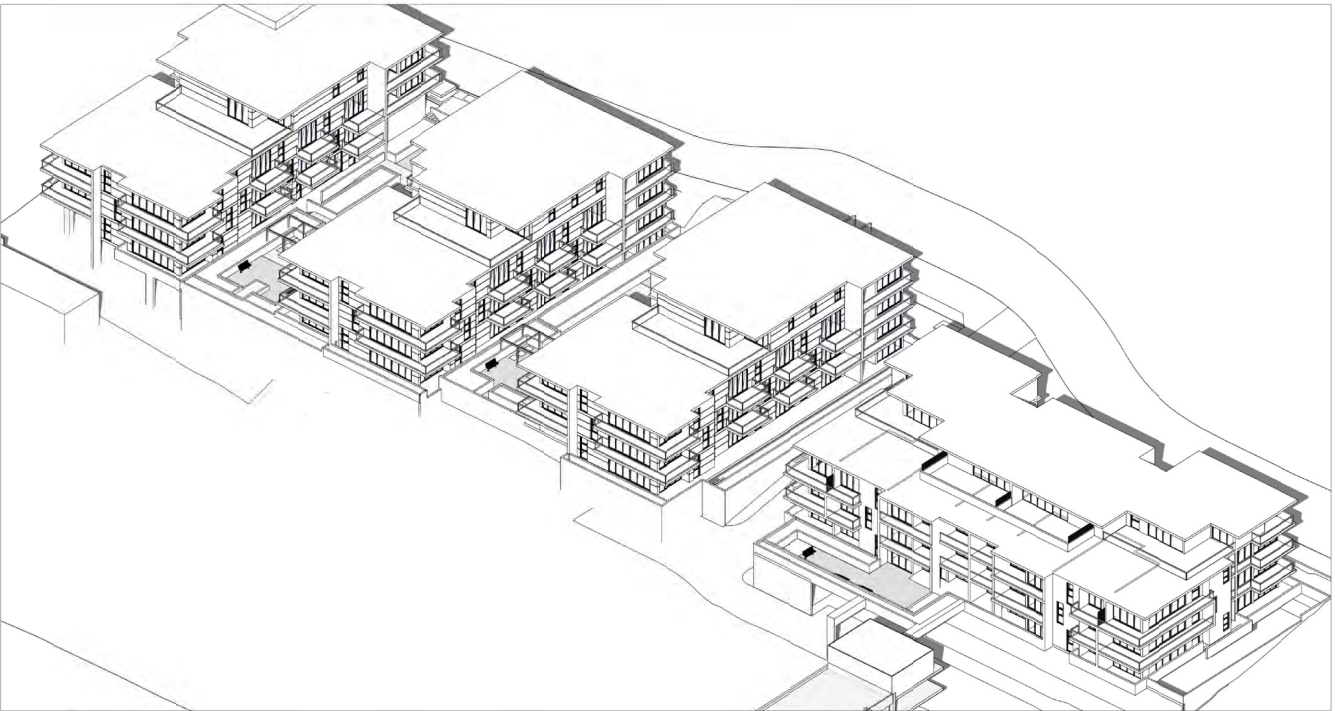
9am



10am



11am



12pm

SOLAR ACCESS DIAGRAM  
WINTER SOLSTICE

X	09.02.18	FOR APPROVAL	djm	ADM
ISSUE	DATE	DESCRIPTION	initials	chkd
sign			date	
These drawings are not to be scaled. Figured dimensions shall be used in all cases.				

COPYRIGHT - These drawings remain the exclusive copyright of ADM Architects. Reproductions in any form whether electronic, digital or otherwise shall not be allowed except by express permission granted in writing by ADM Architects.

FIGURED DIMENSIONS - These drawings are not to be scaled. Figured dimensions shall be used in all cases.

DISCREPANCIES IN DIMENSIONS/POSITIONS/LOCATIONS/FINISHES The Contractor is to verify any dimensional, location or finish discrepancy with ADM Architects prior to any physical construction or setting out so that ADM Architects is given the opportunity to resolve potential discrepancies or conflicts in sufficient time without causing abortive work. The Contractor shall be responsible for notifying ADM Architects of any such discrepancy or conflict that may arise on site.

COORDINATION OF WORKS - These drawings are to be read in conjunction with the full set of consultant's drawings, specifications, reports and DA conditions.

NOMINATED ARCHITECT - The nominated Architect for ADM Projects (Australia) Pty Ltd T/A ADM Architects is Angelo Di Martino AIBB No.7608



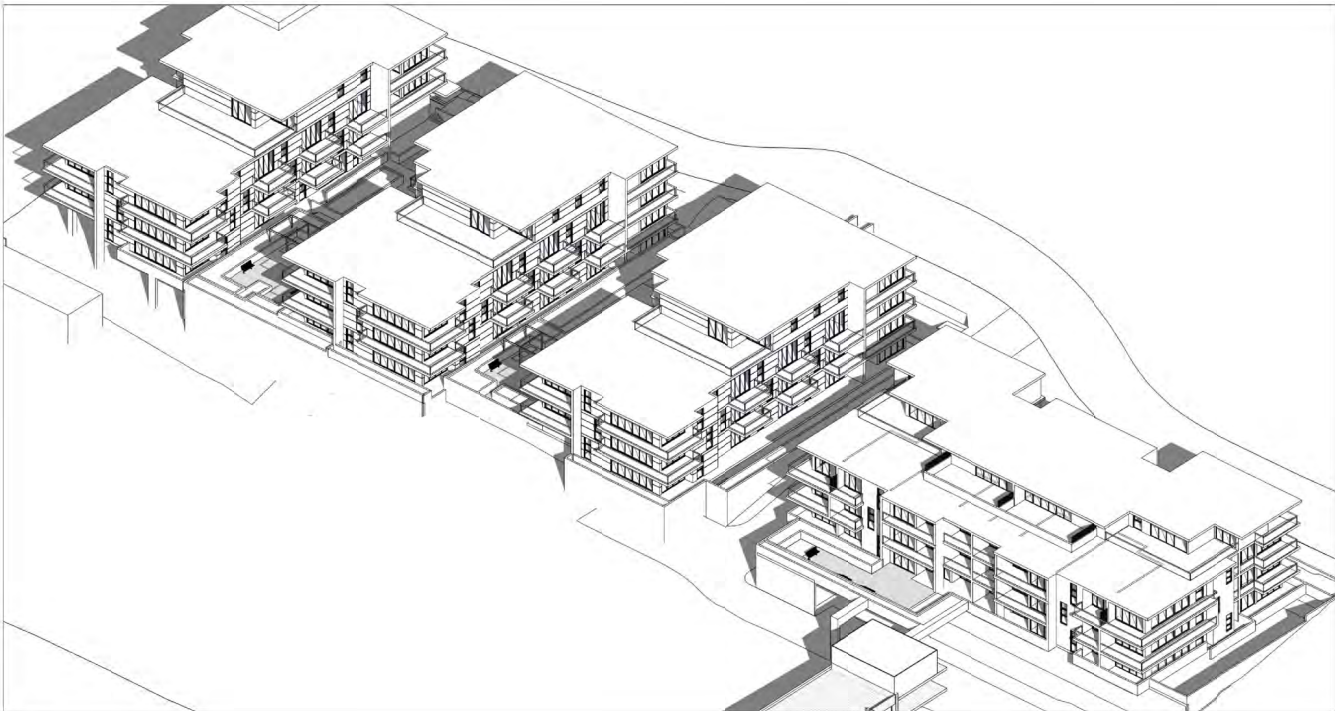
NICOLAS  
DAOUD &  
CO PTY. Ltd

Project  
DEMOLITION OF EXISTING STRUCTURES AND CONSTRUCTION  
OF A MIXED USE DEVELOPMENT COMPRISING RESIDENTIAL  
APARTMENTS ABOVE RETAIL SHOPS, COMMERCIAL TENANCIES  
AND ASSOCIATED CARPARKING AREAS  
at  
LOT 1, DP50193, LOT 3, DP1104857, PT.1, DP506764, LOTS 100 & 200,  
DP1017091,  
AKUNA & TERRALONG STREET  
KIAMA

scale	NTS
date	FEBRUARY 2018
drawn	djm SJ chkd ADM
drawing	DEVELOPMENT APPLICATION
Project No.	SOLAR ACCESS DIAGRAM 1 of 2
2016-19(a)	Project No. Drawing No. issue
A-405	X

NOT FOR CONSTRUCTION





1pm



2pm



3pm

SOLAR ACCESS DIAGRAM  
WINTER SOLSTICE

X	09.02.18	FOR APPROVAL	djm	ADM
ISSUE	DATE	DESCRIPTION	initials	chkd
sign			date	
These drawings are not to be scaled. Figured dimensions shall be used in all cases.				

COPYRIGHT - These drawings remain the exclusive copyright of ADM Architects. Reproductions in any form whether electronic, digital or otherwise shall not be allowed except by express permission granted in writing by ADM Architects.

FIGURED DIMENSIONS - These drawings are not to be scaled. Figured dimensions shall be used in all cases.

DISCREPANCIES IN DIMENSIONS/POSITIONS/LOCATIONS/FINISHES The Contractor is to verify any dimensional, location or finish discrepancy with ADM Architects prior to any physical construction or setting out so that ADM Architects is given the opportunity to resolve potential discrepancies or conflicts in sufficient time without causing abortive work. The Contractor shall be responsible for notifying ADM Architects of any such discrepancy or conflict that may arise on site.

COORDINATION OF WORKS - These drawings are to be read in conjunction with the full set of consultant's drawings, specifications, reports and DA conditions.

NOMINATED ARCHITECT - The nominated Architect for ADM Projects (Australia) Pty Ltd T/A ADM Architects is Angelo Di Martino AIB No.7608



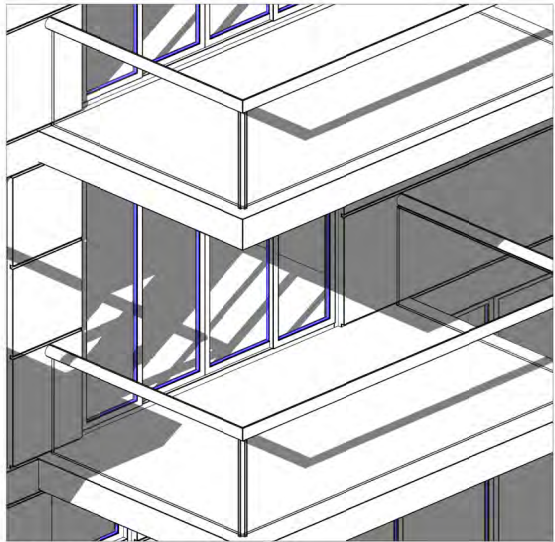
NICOLAS  
DAOUD &  
CO PTY. Ltd

Project  
DEMOLITION OF EXISTING STRUCTURES AND CONSTRUCTION  
OF A MIXED USE DEVELOPMENT COMPRISING RESIDENTIAL  
APARTMENTS ABOVE RETAIL SHOPS, COMMERCIAL TENANCIES  
AND ASSOCIATED CARPARKING AREAS  
at  
LOT 1, DP50193, LOT 3, DPI 104857, PT.1, DP506764, LOTS 100 & 200,  
DPI017091,  
AKUNA & TERRALONG STREET  
KIAMA

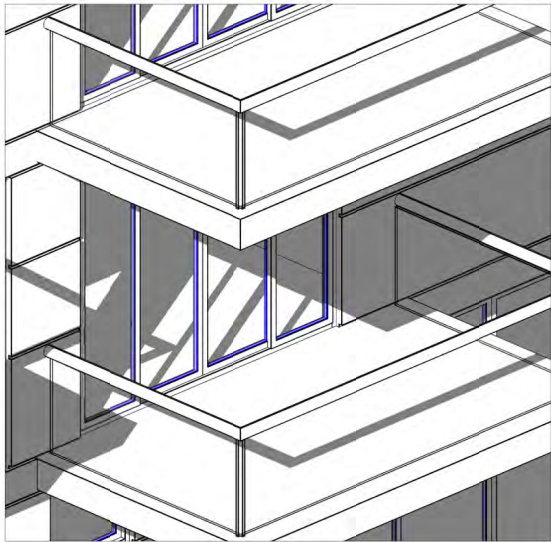
scale	NTS			
date	FEBRUARY 2018			
drawn	djm	SJ	chkd	ADM
drawing	DEVELOPMENT APPLICATION			
	SOLAR ACCESS DIAGRAM 2 of 2			
Project No.	2016-19(a)		Drawing No.	A-406
issue				X

NOT FOR CONSTRUCTION

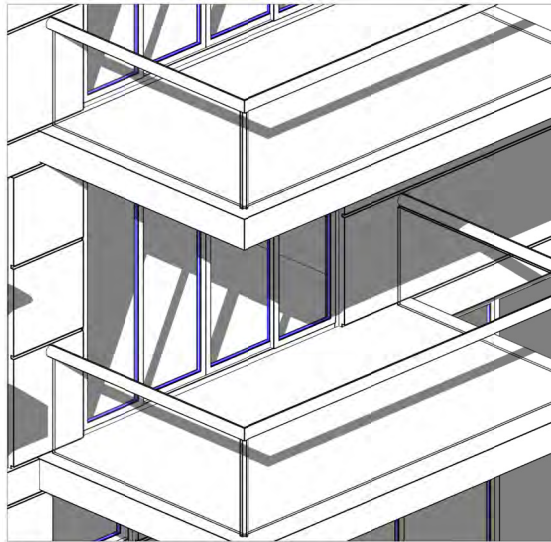




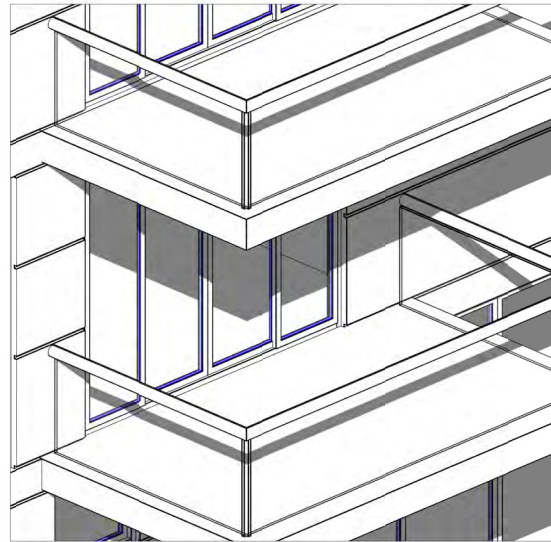
11:15am



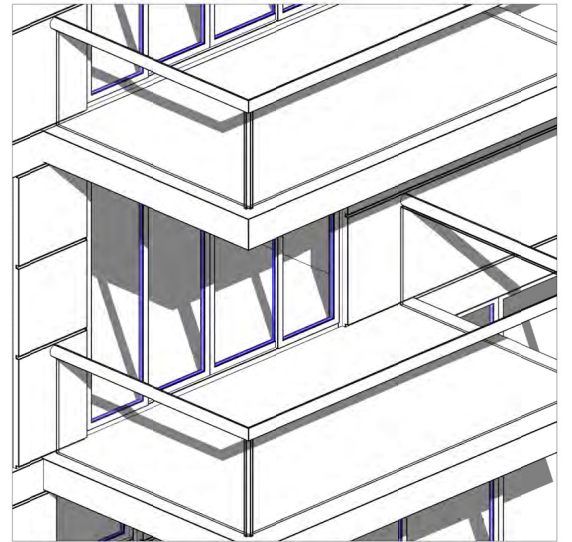
11:30am



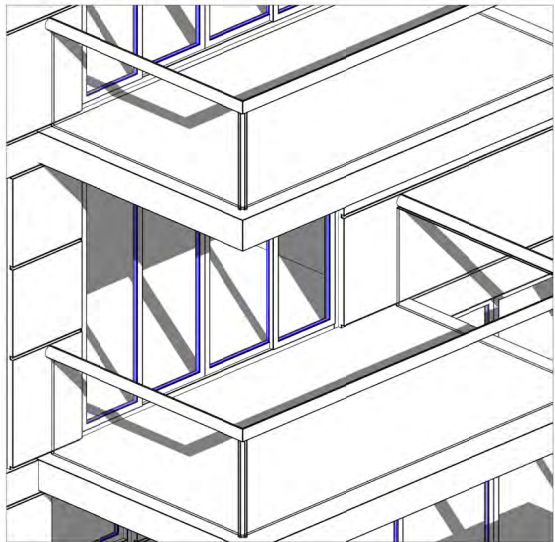
12pm



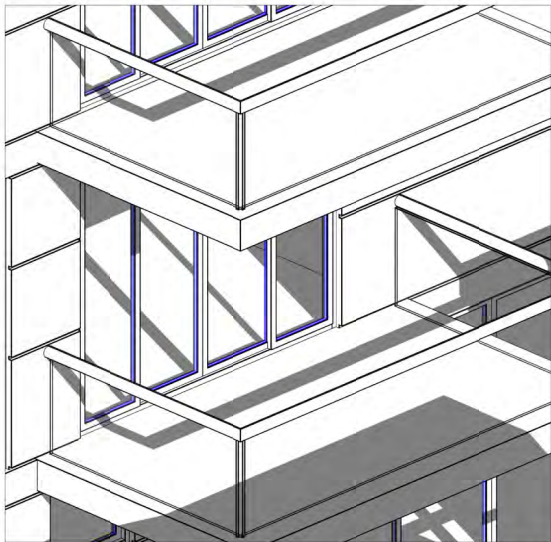
12:30pm



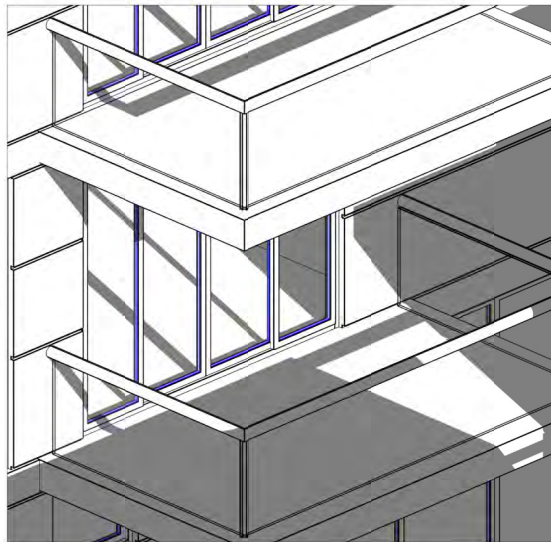
1pm



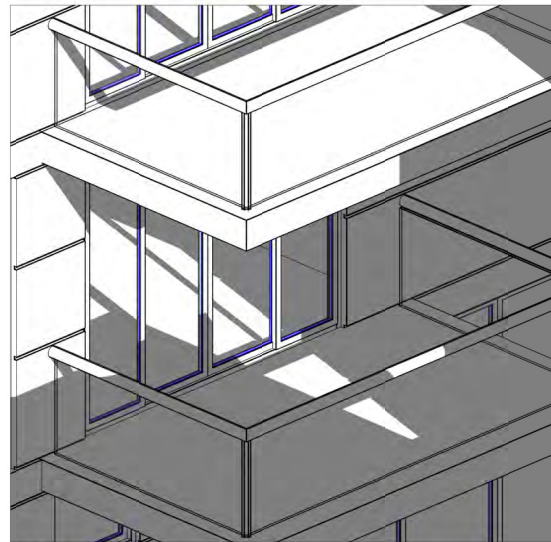
1:30pm



2pm



2:15pm



2:30pm

## SOLAR ACCESS DIAGRAM WINTER SOLSTICE

Y	13.03.18	ADDITIONAL INFORMATION	SJ	ADM
X	09.02.18	FOR APPROVAL	djm	ADM
ISSUE	DATE	DESCRIPTION	initials	chkd
sign			date	
a These drawings are not to be scaled. Figured dimensions shall be used in all cases.				

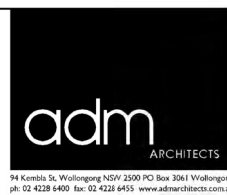
COPYRIGHT - These drawings remain the exclusive copyright of ADM Architects. Reproductions in any form whether electronic, digital or otherwise shall not be allowed except by express permission granted in writing by ADM Architects.

FIGURED DIMENSIONS - These drawings are not to be scaled. Figured dimensions shall be used in all cases.

DISCREPANCIES IN DIMENSIONS/POSITIONS/LOCATIONS/FINISHES The Contractor is to verify any dimensional, location or finish discrepancy with ADM Architects prior to any physical construction or setting out so that ADM Architects is given the opportunity to resolve potential discrepancies or conflicts in sufficient time without causing abortive work. The Contractor shall be responsible for notifying ADM Architects of any such discrepancy or conflict that may arise on site.

COORDINATION OF WORKS - These drawings are to be read in conjunction with the full set of consultant's drawings, specifications, reports and DA conditions.

NOMINATED ARCHITECT - The nominated Architect for ADM Projects (Australia) Pty Ltd T/A ADM Architects is Angelo Di Martino AIB No.7608



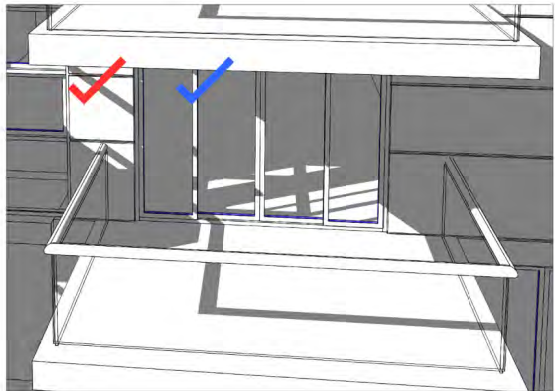
**NICOLAS  
DAOUD &  
CO PTY. Ltd**

Project  
DEMOLITION OF EXISTING STRUCTURES AND CONSTRUCTION  
OF A MIXED USE DEVELOPMENT COMPRISING RESIDENTIAL  
APARTMENTS ABOVE RETAIL SHOPS, COMMERCIAL TENANCIES  
AND ASSOCIATED CARPARKING AREAS  
at  
LOT 1, DP50193, LOT 3, DPI 104857, PT.1, DP506764, LOTS 100 & 200,  
DPI017091,  
AKUNA & TERRALONG STREET  
KIAMA

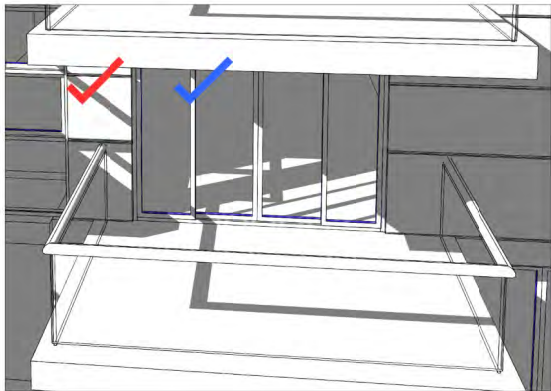
scale	NTS
date	MARCH 2018
drawn	djm SJ chkd ADM
drawing	DEVELOPMENT APPLICATION
Project No.	SOLAR ACCESS - A203
2016-19(a)	2016-19(a)
Drawing No.	A-407a
issue	Y

NOT FOR CONSTRUCTION

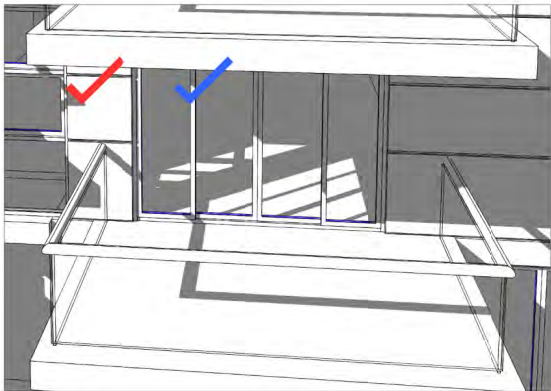




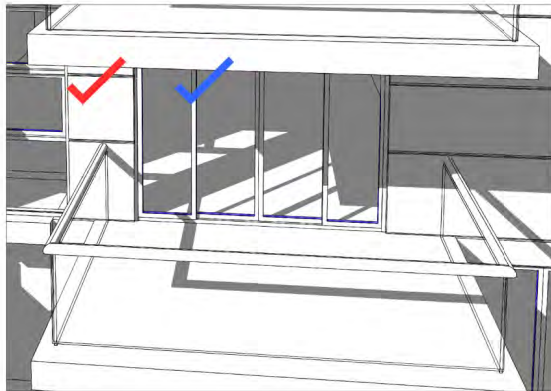
1115am



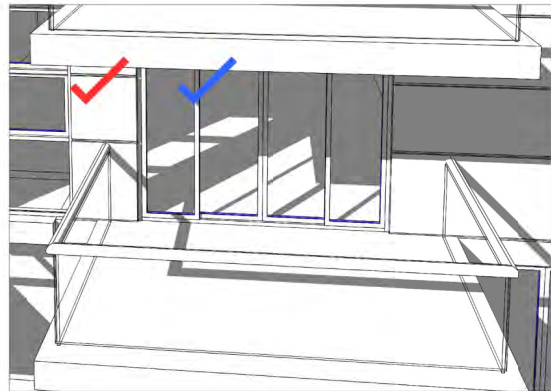
1130am



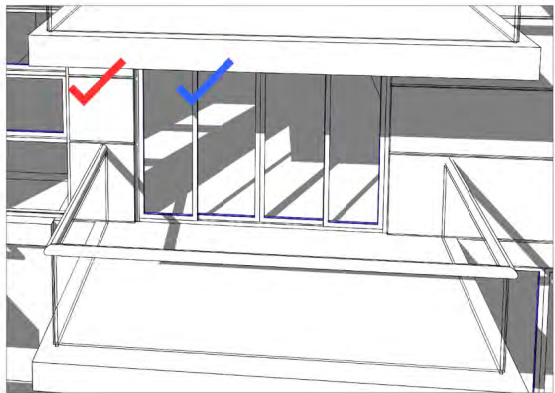
12pm



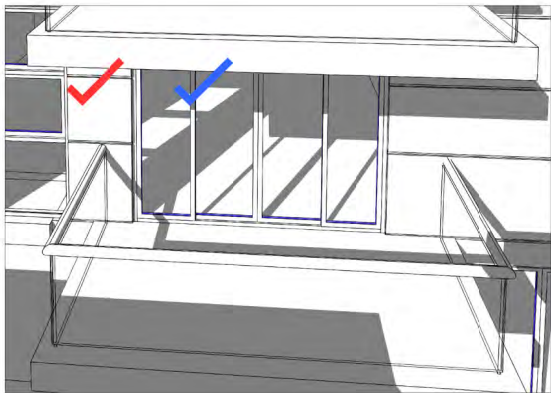
1230pm



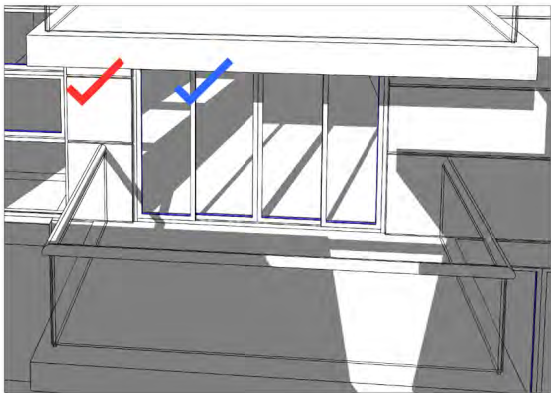
1pm



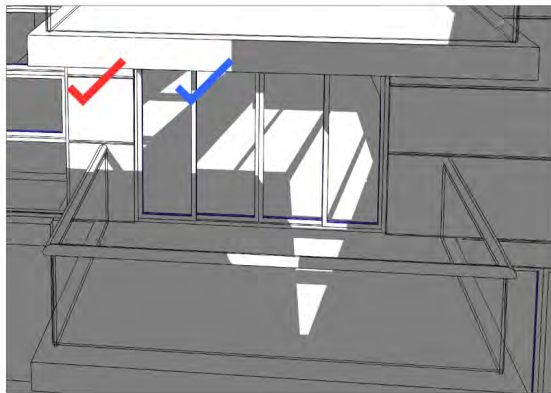
130pm



2pm



215pm



230pm

## SOLAR ACCESS WINTER SOLSTICE



BALCONY 3hrs 15mins



LIVING 3hrs 15mins

NOT FOR CONSTRUCTION

Y	13.03.18	ADDITIONAL INFORMATION	SJ	ADM
X	09.02.18	FOR APPROVAL	djm	ADM
ISSUE	DATE	DESCRIPTION	initials	chkd
sign			date	
These drawings are not to be scaled. Figured dimensions shall be used in all cases.				

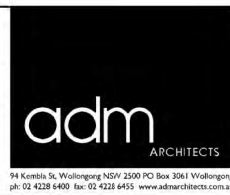
COPYRIGHT - These drawings remain the exclusive copyright of ADM Architects. Reproductions in any form whether electronic, digital or otherwise shall not be allowed except by express permission granted in writing by ADM Architects.

FIGURED DIMENSIONS - These drawings are not to be scaled. Figured dimensions shall be used in all cases.

DISCREPANCIES IN DIMENSIONS/POSITIONS/LOCATIONS/FINISHES The Contractor is to verify any dimensional, location or finish discrepancy with ADM Architects prior to any physical construction or setting out so that ADM Architects is given the opportunity to resolve potential discrepancies or conflicts in sufficient time without causing abortive work. The Contractor shall be responsible for notifying ADM Architects of any such discrepancy or conflict that may arise on site.

COORDINATION OF WORKS - These drawings are to be read in conjunction with the full set of consultant's drawings, specifications, reports and DA conditions.

NOMINATED ARCHITECT - The nominated Architect for ADM Projects (Australia) Pty Ltd T/A ADM Architects is Angelo Di Martino AIB No.7608



NICOLAS  
DAOUD &  
CO PTY. Ltd

Project  
DEMOLITION OF EXISTING STRUCTURES AND CONSTRUCTION  
OF A MIXED USE DEVELOPMENT COMPRISING RESIDENTIAL  
APARTMENTS ABOVE RETAIL SHOPS, COMMERCIAL TENANCIES  
AND ASSOCIATED CARPARKING AREAS

at  
LOT 1, DP50193, LOT 3, DPI 104857, PT.1, DP506764, LOTS 100 & 200,  
DPI017091,  
AKUNA & TERRALONG STREET  
KIAMA

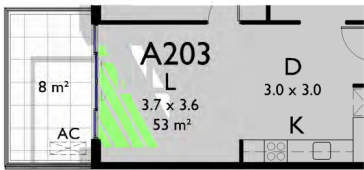
scale	NTS
date	MARCH 2018
drawn	djm SJ chkd ADM
drawing	DEVELOPMENT APPLICATION
Project No.	SOLAR ACCESS - A203
2016-19(a)	Project No.
A-407b	Drawing No.
Y	issue





1115am

SHADED AREA = 1.4m²



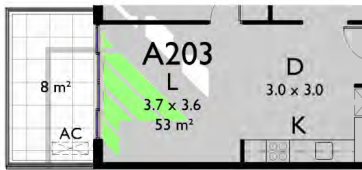
1130am

SHADED AREA = 1.7m²



12pm

SHADED AREA = 2.0m²



1230pm

SHADED AREA = 2.4m²



1pm

SHADED AREA = 3.3m²



130pm

SHADED AREA = 4.5m²



2pm

SHADED AREA = 6.3m²



215pm

SHADED AREA = 7.5m²



230pm

SHADED AREA = 5.9m²

## SOLAR ACCESS PLANS WINTER SOLSTICE

Y	13.03.18	ADDITIONAL INFORMATION FOR APPROVAL	SJ	ADM
X	09.02.18		djm	ADM
ISSUE	DATE	DESCRIPTION	initials	chkd
sign			date	
These drawings are not to be scaled. Figured dimensions shall be used in all cases.				

COPYRIGHT - These drawings remain the exclusive copyright of ADM Architects. Reproductions in any form whether electronic, digital or otherwise shall not be allowed except by express permission granted in writing by ADM Architects.

FIGURED DIMENSIONS - These drawings are not to be scaled. Figured dimensions shall be used in all cases.

DISCREPANCIES IN DIMENSIONS/POSITIONS/LOCATIONS/FINISHES The Contractor is to verify any dimensional, location or finish discrepancy with ADM Architects prior to any physical construction or setting out so that ADM Architects is given the opportunity to resolve potential discrepancies or conflicts in sufficient time without causing abortive work. The Contractor shall be responsible for notifying ADM Architects of any such discrepancy or conflict that may arise on site.

COORDINATION OF WORKS - These drawings are to be read in conjunction with the full set of consultant's drawings, specifications, reports and DA conditions.

NOMINATED ARCHITECT - The nominated Architect for ADM Projects (Australia) Pty Ltd T/as ADM Architects is Angelo Di Martino AIB No.7608



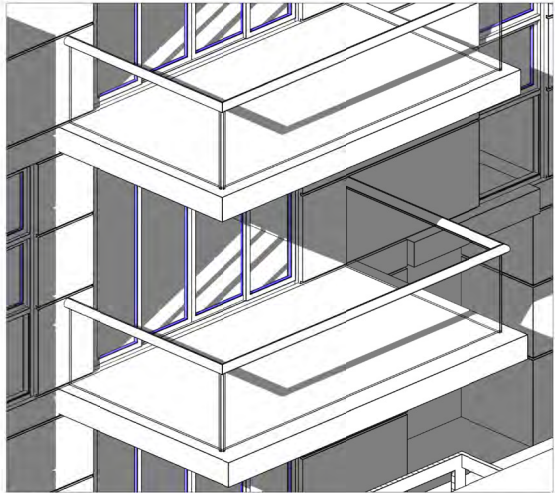
NICOLAS  
DAOUD &  
CO PTY. Ltd

Project  
DEMOLITION OF EXISTING STRUCTURES AND CONSTRUCTION  
OF A MIXED USE DEVELOPMENT COMPRISING RESIDENTIAL  
APARTMENTS ABOVE RETAIL SHOPS, COMMERCIAL TENANCIES  
AND ASSOCIATED CARPARKING AREAS

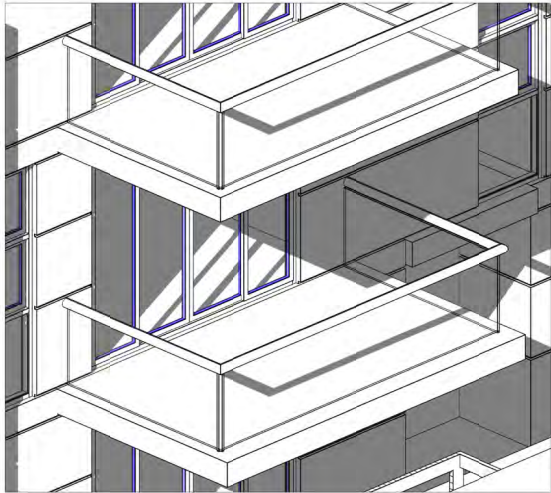
at  
LOT 1, DP50193, LOT 3, DP1104857, PT.1, DP506764, LOTS 100 & 200,  
DP1017091,  
AKUNA & TERRALONG STREET  
KIAMA

scale	NTS
date	MARCH 2018
drawn	djm SJ chkd ADM
drawing	DEVELOPMENT APPLICATION
Project No.	SOLAR ACCESS - A203
2016-19(a)	Project No. Drawing No. issue
A-407c	Y

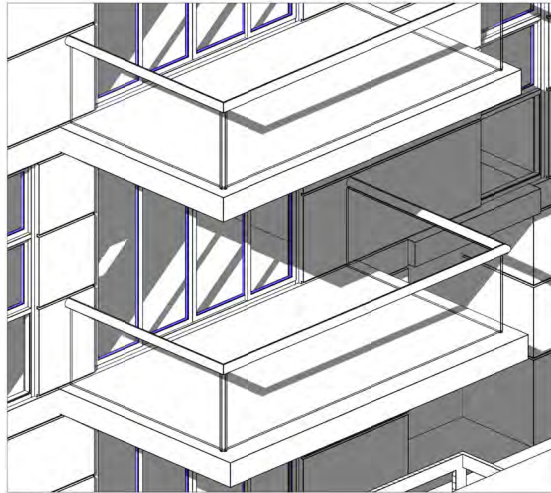




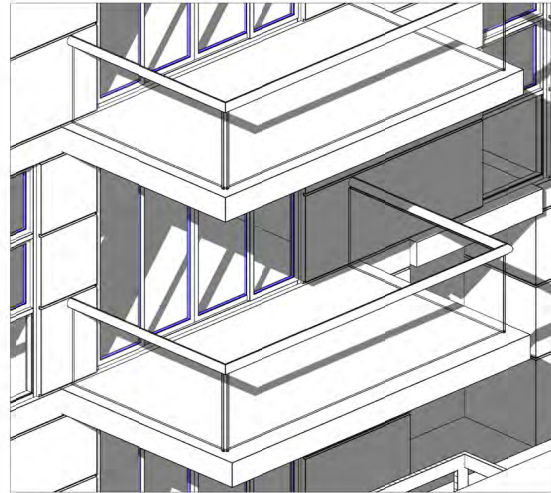
11am



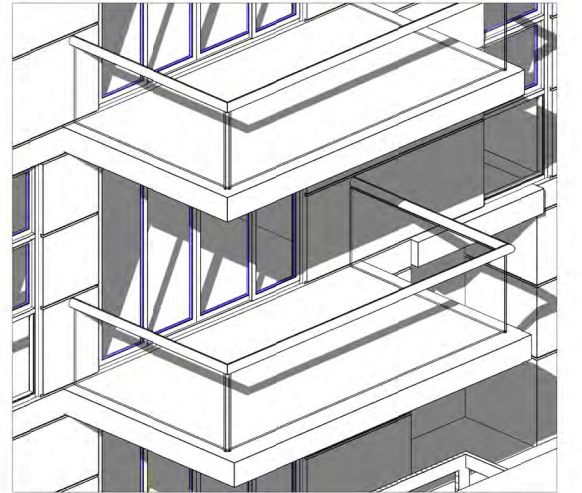
1115am



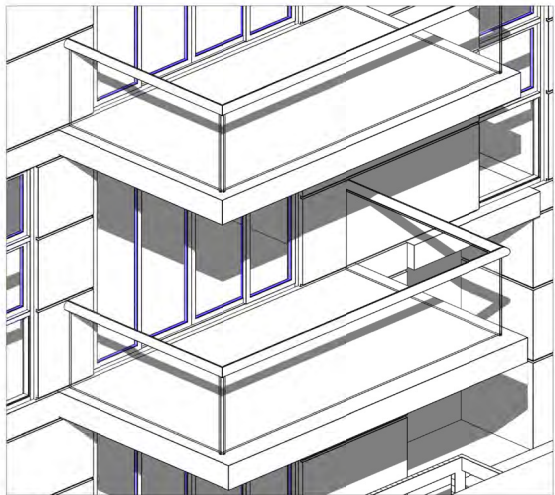
1130am



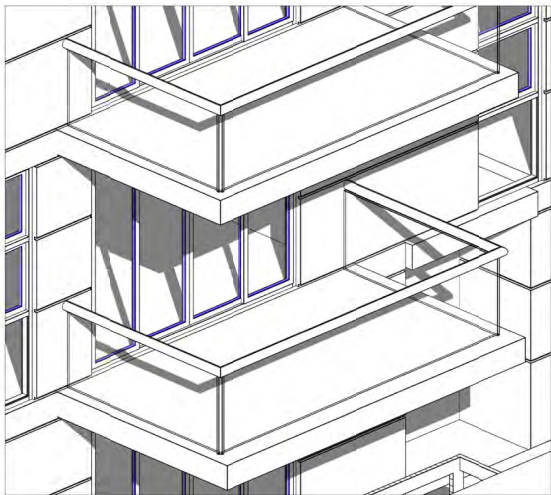
1145am



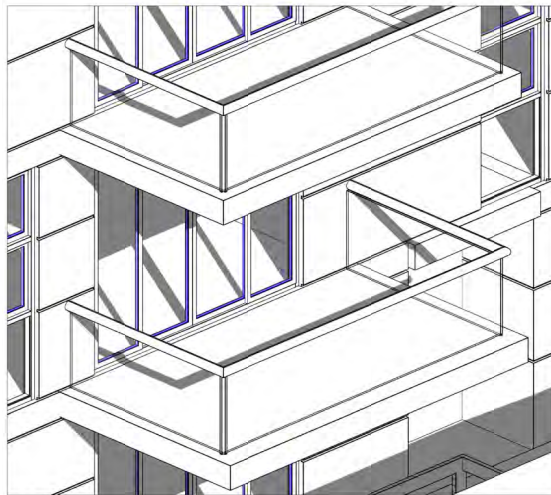
12pm



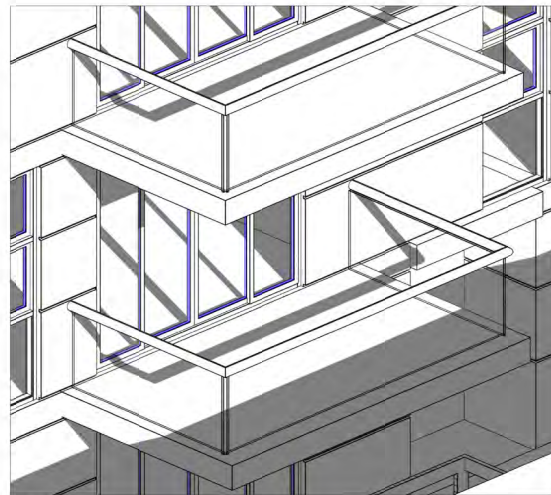
1230pm



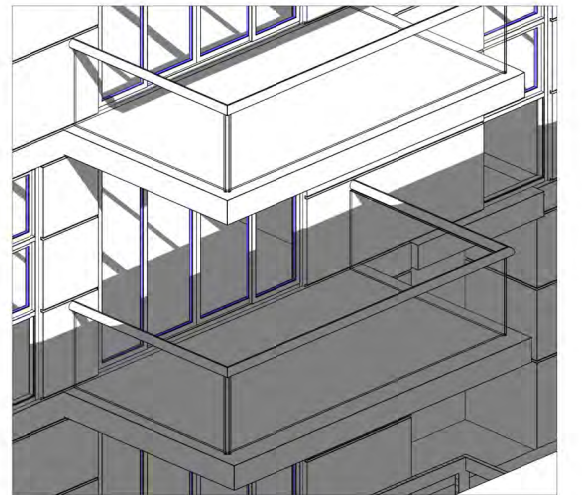
1pm



130pm



2pm



230pm

## SOLAR ACCESS DIAGRAM WINTER SOLSTICE

Y	13.03.18	ADDITIONAL INFORMATION	SJ	ADM
X	09.02.18	FOR APPROVAL	djm	ADM
ISSUE	DATE	DESCRIPTION	initials	chkd
sign		date		
□ These drawings are not to be scaled. Figured dimensions shall be used in all cases.				

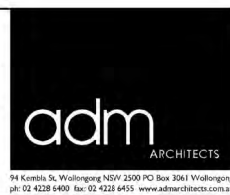
COPYRIGHT - These drawings remain the exclusive copyright of ADM Architects. Reproductions in any form whether electronic, digital or otherwise shall not be allowed except by express permission granted in writing by ADM Architects.

FIGURED DIMENSIONS - These drawings are not to be scaled. Figured dimensions shall be used in all cases.

DISCREPANCIES IN DIMENSIONS/POSITIONS/LOCATIONS/FINISHES The Contractor is to verify any dimensional, location or finish discrepancy with ADM Architects prior to any physical construction or setting out so that ADM Architects is given the opportunity to resolve potential discrepancies or conflicts in sufficient time without causing abortive work. The Contractor shall be responsible for notifying ADM Architects of any such discrepancy or conflict that may arise on site.

COORDINATION OF WORKS - These drawings are to be read in conjunction with the full set of consultant's drawings, specifications, reports and DA conditions.

NOMINATED ARCHITECT - The nominated Architect for ADM Projects (Australia) Pty Ltd T/A ADM Architects is Angelo Di Martino ABB No.7608



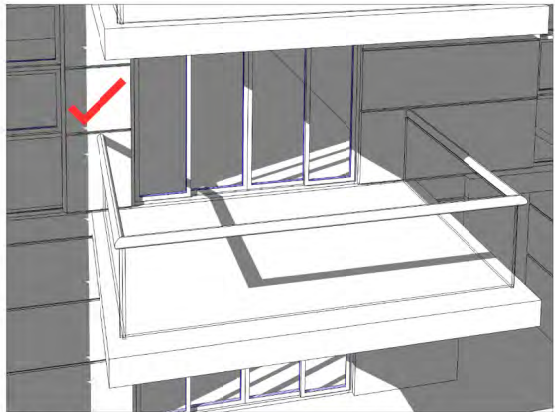
**NICOLAS  
DAOUD &  
CO PTY. Ltd**

Project  
DEMOLITION OF EXISTING STRUCTURES AND CONSTRUCTION  
OF A MIXED USE DEVELOPMENT COMPRISING RESIDENTIAL  
APARTMENTS ABOVE RETAIL SHOPS, COMMERCIAL TENANCIES  
AND ASSOCIATED CARPARKING AREAS  
at  
LOT 1, DP50193, LOT 3, DP1104857, PT.1, DP506764, LOTS 100 & 200,  
DP1017091,  
AKUNA & TERRALONG STREET  
KIAMA

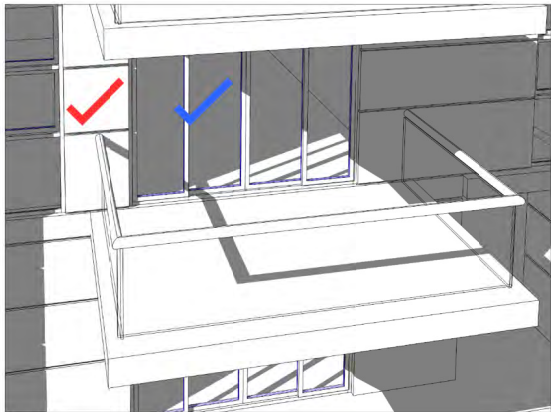
scale	NTS
date	MARCH 2018
drawn	djm SJ chkd ADM
drawing	DEVELOPMENT APPLICATION
Project No.	SOLAR ACCESS - A204
2016-19(a)	2016-19(a)
Drawing No.	A-408a
issue	Y

NOT FOR CONSTRUCTION

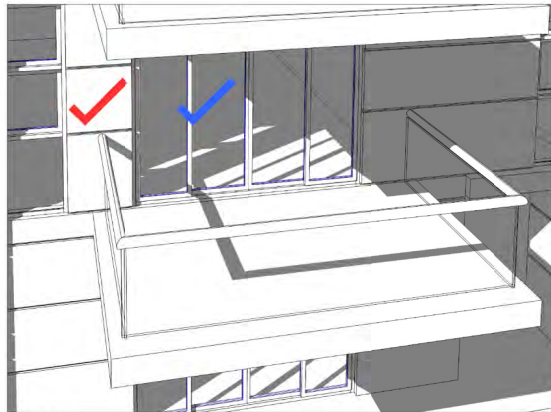




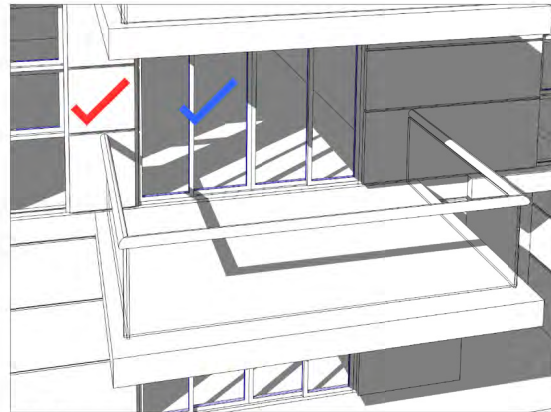
11am



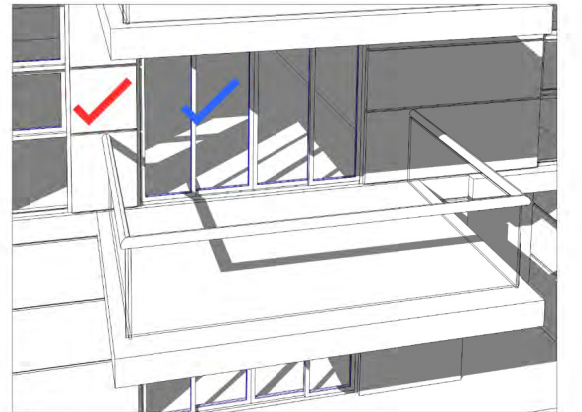
1115am



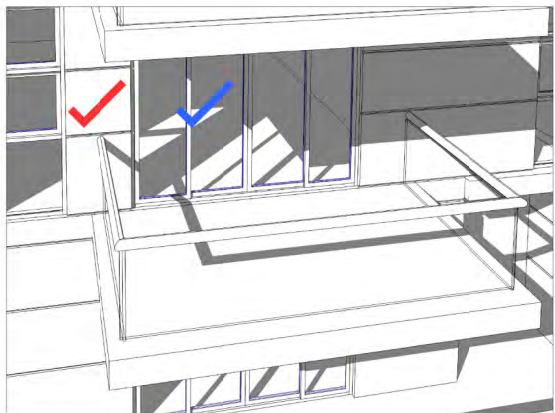
1130am



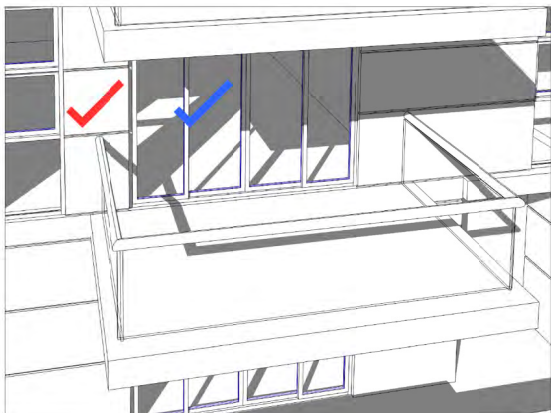
1145am



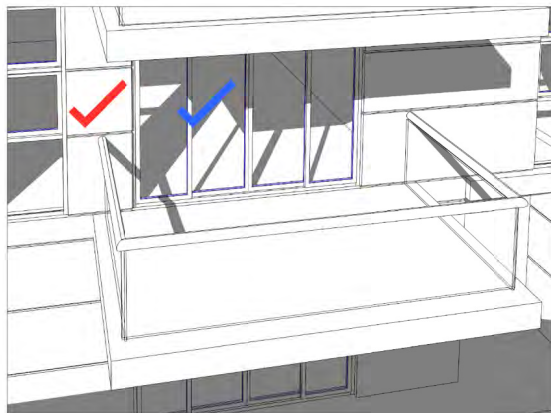
12pm



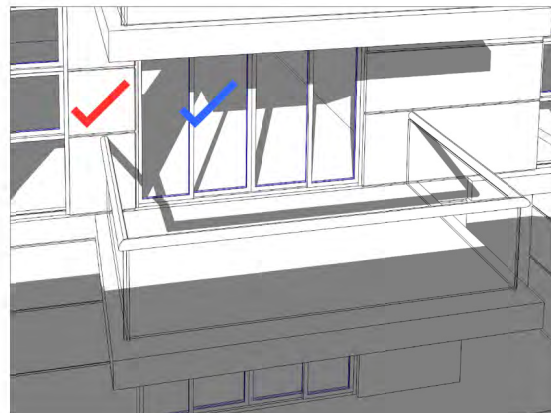
1230pm



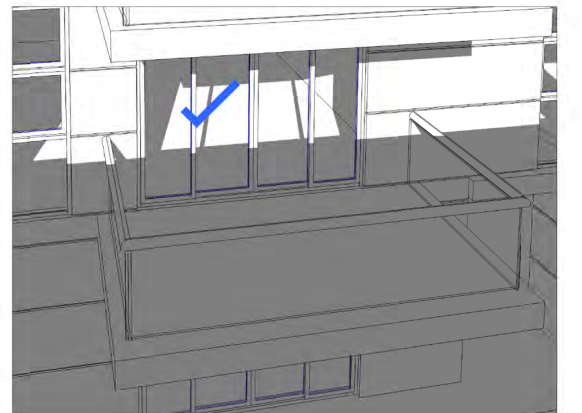
1pm



130pm



2pm



230pm

## SOLAR ACCESS WINTER SOLSTICE



BALCONY 3hrs

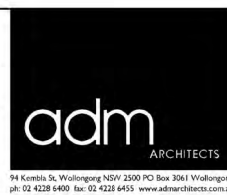


LIVING 3hrs 15mins

NOT FOR CONSTRUCTION

Y	13.03.18	ADDITIONAL INFORMATION	SJ	ADM
X	09.02.18	FOR APPROVAL	djm	ADM
ISSUE	DATE	DESCRIPTION	initials	chkd
sign			date	
a These drawings are not to be scaled. Figured dimensions shall be used in all cases.				

COPYRIGHT - These drawings remain the exclusive copyright of ADM Architects. Reproductions in any form whether electronic, digital or otherwise shall not be allowed except by express permission granted in writing by ADM Architects.  
FIGURED DIMENSIONS - These drawings are not to be scaled. Figured dimensions shall be used in all cases.  
DISCREPANCIES IN DIMENSIONS/POSITIONS/LOCATIONS/FINISHES The Contractor is to verify any dimensional, location or finish discrepancy with ADM Architects prior to any physical construction or setting out so that ADM Architects is given the opportunity to resolve potential discrepancies or conflicts in sufficient time without causing abortive work. The Contractor shall be responsible for notifying ADM Architects of any such discrepancy or conflict that may arise on site.  
COORDINATION OF WORKS - These drawings are to be read in conjunction with the full set of consultant's drawings, specifications, reports and DA conditions.  
NOMINATED ARCHITECT - The nominated Architect for ADM Projects (Australia) Pty Ltd T/A ADM Architects is Angelo Di Martino AIB No.7608

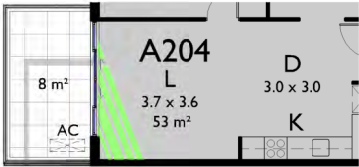


NICOLAS  
DAOUD &  
CO PTY. Ltd

Project  
DEMOLITION OF EXISTING STRUCTURES AND CONSTRUCTION  
OF A MIXED USE DEVELOPMENT COMPRISING RESIDENTIAL  
APARTMENTS ABOVE RETAIL SHOPS, COMMERCIAL TENANCIES  
AND ASSOCIATED CARPARKING AREAS  
at  
LOT 1, DP50193, LOT 3, DP1104857, PT.1, DP506764, LOTS 100 & 200,  
DP1017091,  
AKUNA & TERRALONG STREET  
KIAMA

scale	NTS			
date	MARCH 2018			
drawn	djm	SJ	chkd	ADM
drawing	DEVELOPMENT APPLICATION			
SOLAR ACCESS - A204				
Project No.	Drawing No.			issue
2016-19(a)	A-408b			Y





1115am

SHADED AREA = 1.3m²



1130am

SHADED AREA = 1.6m²



12pm

SHADED AREA = 1.8m²



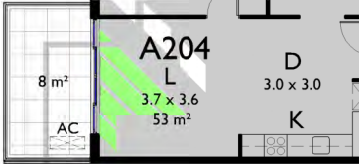
1230pm

SHADED AREA = 1.9m²



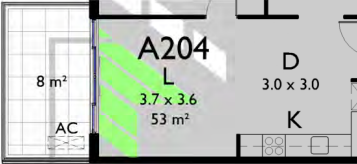
1pm

SHADED AREA = 2.0m²



130pm

SHADED AREA = 2.4m²



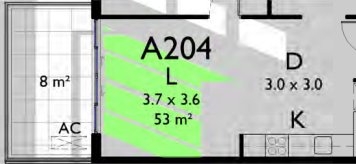
2pm

SHADED AREA = 3.3m²



215pm

SHADED AREA = 4.5m²



230pm

SHADED AREA = 6.3m²

# SOLAR ACCESS PLANS WINTER SOLSTICE

Y	13.03.18	ADDITIONAL INFORMATION FOR APPROVAL	SJ	ADM
X	09.02.18		djm	ADM
ISSUE	DATE	DESCRIPTION	initials	chkd
sign			date	
These drawings are not to be scaled. Figured dimensions shall be used in all cases.				

COPYRIGHT - These drawings remain the exclusive copyright of ADM Architects. Reproductions in any form whether electronic, digital or otherwise shall not be allowed except by express permission granted in writing by ADM Architects.

FIGURED DIMENSIONS - These drawings are not to be scaled. Figured dimensions shall be used in all cases.

DISCREPANCIES IN DIMENSIONS/POSITIONS/LOCATIONS/FINISHES The Contractor is to verify any dimensional, location or finish discrepancy with ADM Architects prior to any physical construction or setting out so that ADM Architects is given the opportunity to resolve potential discrepancies or conflicts in sufficient time without causing abortive work. The Contractor shall be responsible for notifying ADM Architects of any such discrepancy or conflict that may arise on site.

COORDINATION OF WORKS - These drawings are to be read in conjunction with the full set of consultant's drawings, specifications, reports and DA conditions.

NOMINATED ARCHITECT - The nominated Architect for ADM Projects (Australia) Pty Ltd T/A ADM Architects is Angelo Di Martino AIB No.7608



NICOLAS  
DAOUD &  
CO PTY. Ltd

Project  
DEMOLITION OF EXISTING STRUCTURES AND CONSTRUCTION  
OF A MIXED USE DEVELOPMENT COMPRISING RESIDENTIAL  
APARTMENTS ABOVE RETAIL SHOPS, COMMERCIAL TENANCIES  
AND ASSOCIATED CARPARKING AREAS

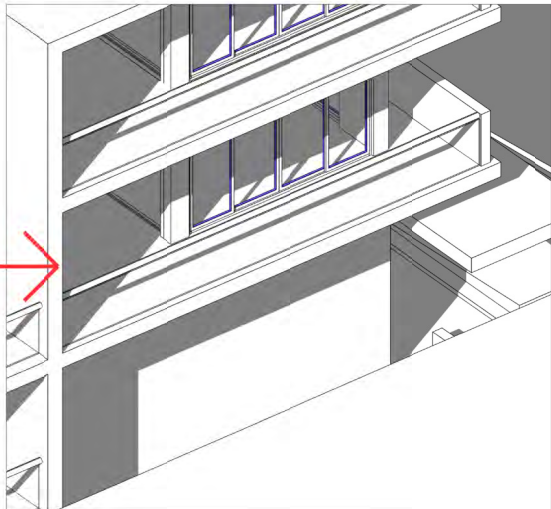
at  
LOT 1, DP50193, LOT 3, DPI 104857, PT.1, DP506764, LOTS 100 & 200,  
DPI017091,  
AKUNA & TERRALONG STREET  
KIAMA

scale	NTS
date	MARCH 2018
drawn	djm SJ chkd ADM
drawing	DEVELOPMENT APPLICATION
Project No.	SOLAR ACCESS - A204
2016-19(a)	Project No.
A-408c	Drawing No.
Y	issue

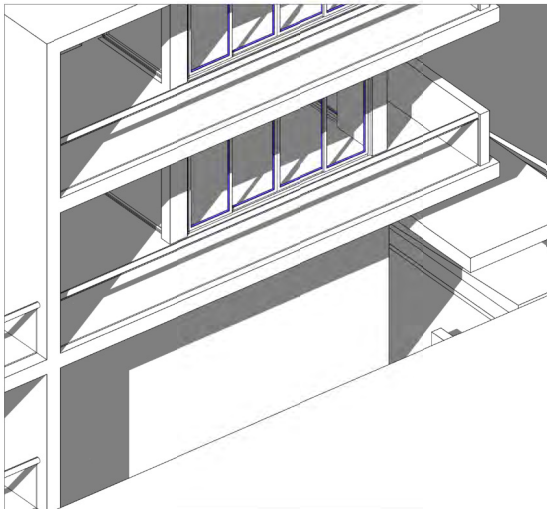
NOT FOR CONSTRUCTION



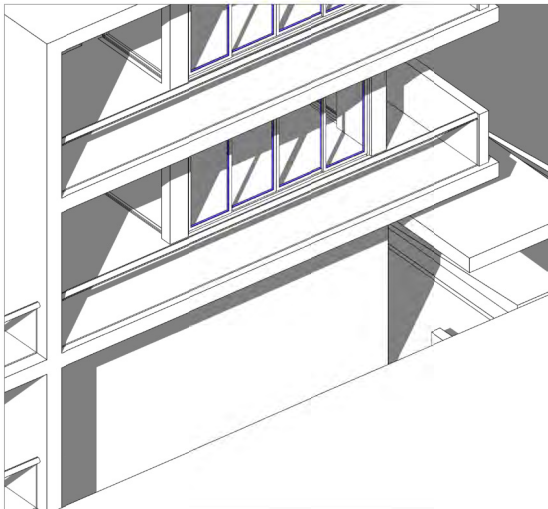
A302



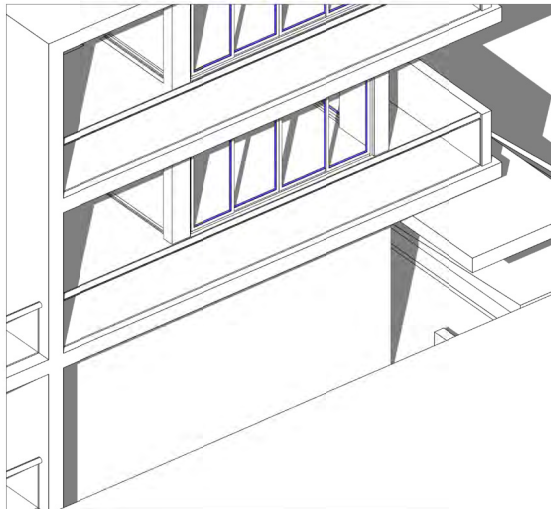
1125am



1130am

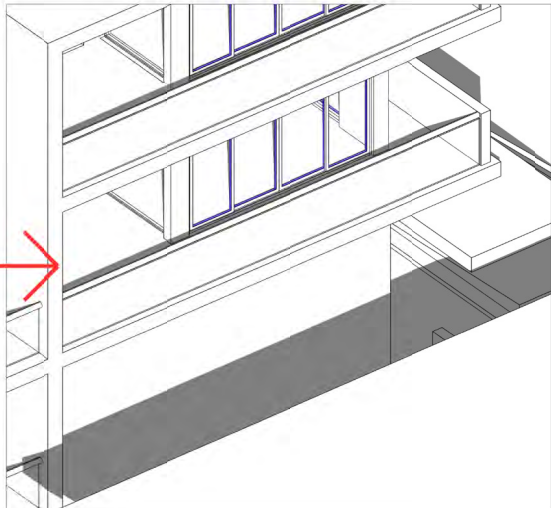


12pm

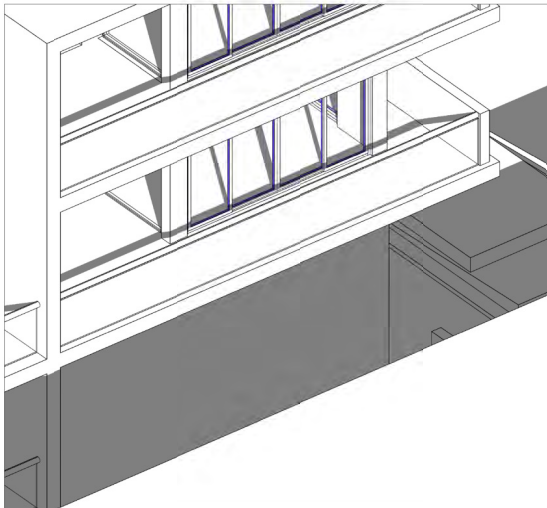


1230pm

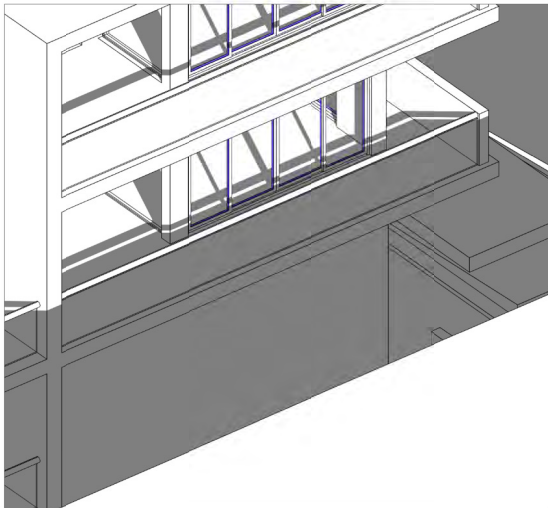
A302



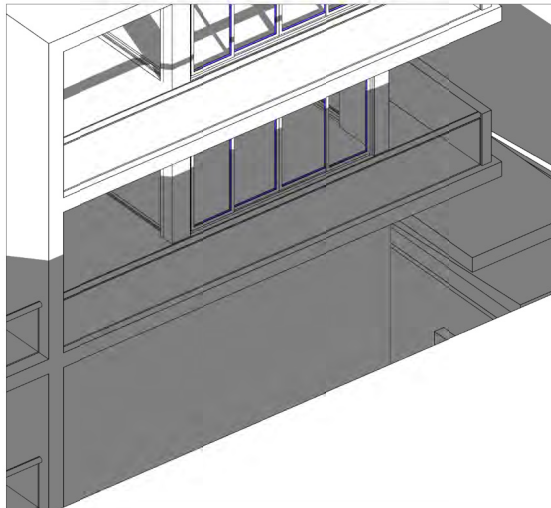
1pm



130pm



2pm



225pm

SOLAR ACCESS DIAGRAM  
WINTER SOLSTICE

Y	13.03.18	ADDITIONAL INFORMATION FOR APPROVAL	SJ	ADM
X	09.02.18		djm	ADM
ISSUE	DATE	DESCRIPTION	initials	chkd
sign			date	
These drawings are not to be scaled. Figured dimensions shall be used in all cases.				

COPYRIGHT - These drawings remain the exclusive copyright of ADM Architects. Reproductions in any form whether electronic, digital or otherwise shall not be allowed except by express permission granted in writing by ADM Architects.

FIGURED DIMENSIONS - These drawings are not to be scaled. Figured dimensions shall be used in all cases.

DISCREPANCIES IN DIMENSIONS/POSITIONS/LOCATIONS/FINISHES The Contractor is to verify any dimensional, location or finish discrepancy with ADM Architects prior to any physical construction or setting out so that ADM Architects is given the opportunity to resolve potential discrepancies or conflicts in sufficient time without causing abortive work. The Contractor shall be responsible for notifying ADM Architects of any such discrepancy or conflict that may arise on site.

COORDINATION OF WORKS - These drawings are to be read in conjunction with the full set of consultant's drawings, specifications, reports and DA conditions.

NOMINATED ARCHITECT - The nominated Architect for ADM Projects (Australia) Pty Ltd T/A ADM Architects is Angelo Di Martino AIB No.7608



NICOLAS  
DAOUD &  
CO PTY. Ltd

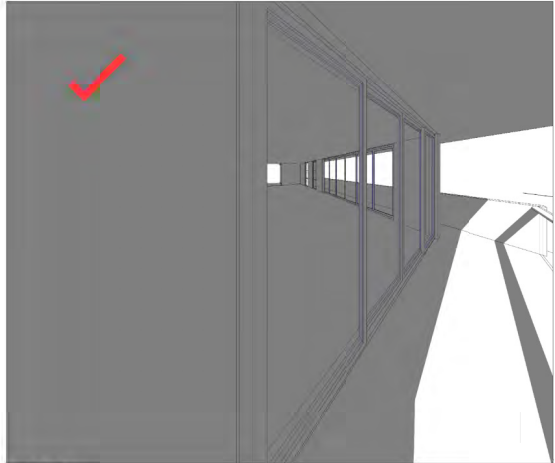
Project  
DEMOLITION OF EXISTING STRUCTURES AND CONSTRUCTION  
OF A MIXED USE DEVELOPMENT COMPRISING RESIDENTIAL  
APARTMENTS ABOVE RETAIL SHOPS, COMMERCIAL TENANCIES  
AND ASSOCIATED CARPARKING AREAS

at  
LOT 1, DP50193, LOT 3, DPI 104857, PT.1, DP506764, LOTS 100 & 200,  
DPI017091,  
AKUNA & TERRALONG STREET  
KIAMA

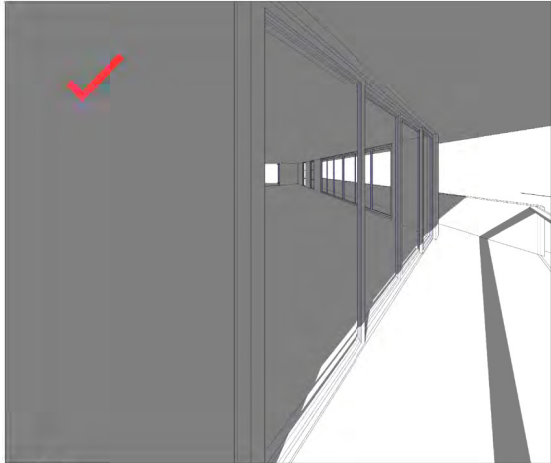
scale	NTS
date	MARCH 2018
drawn	djm SJ chkd ADM
drawing	DEVELOPMENT APPLICATION
Project No.	SOLAR ACCESS - A302
2016-19(a)	Drawn No. A-409a
	issue Y

NOT FOR CONSTRUCTION

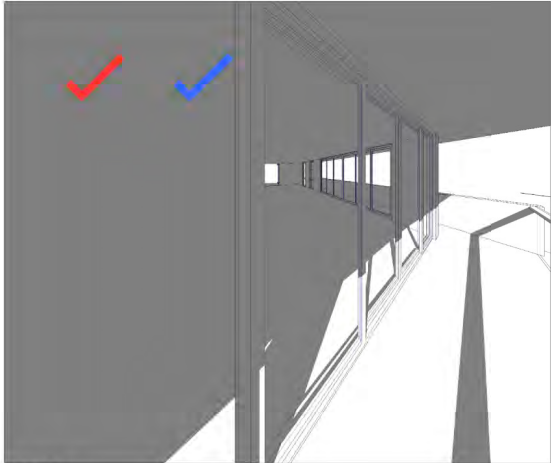




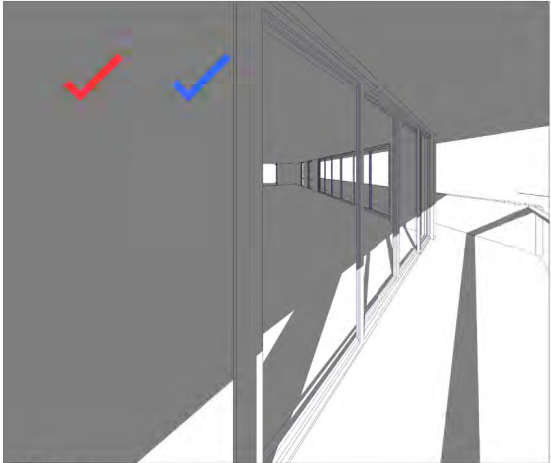
1030am



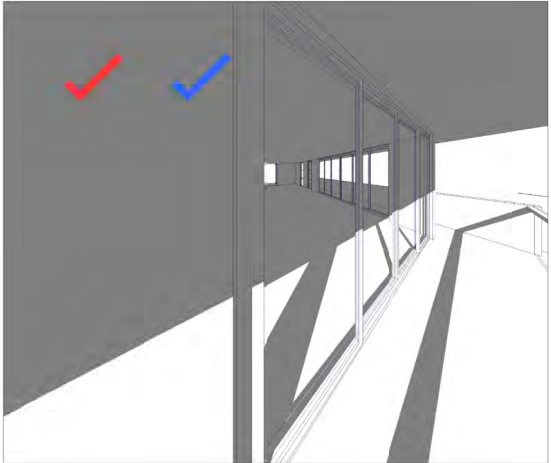
1100am



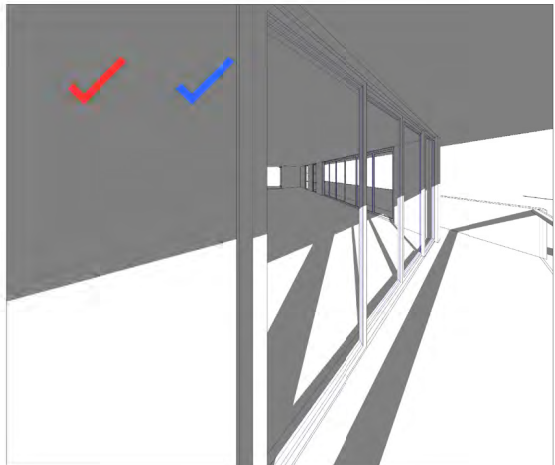
1125am



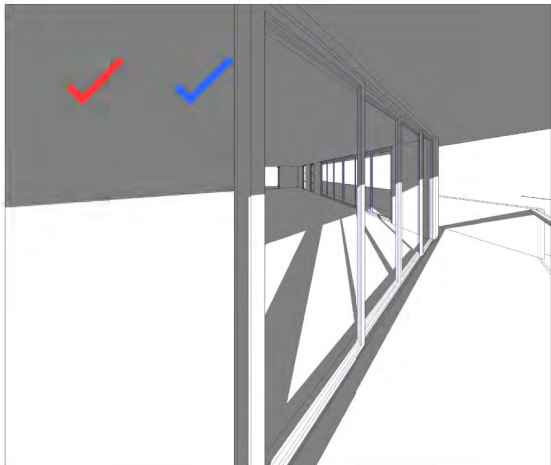
1130pm



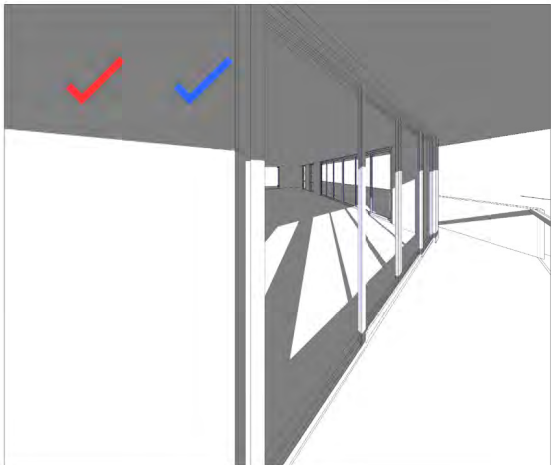
12pm



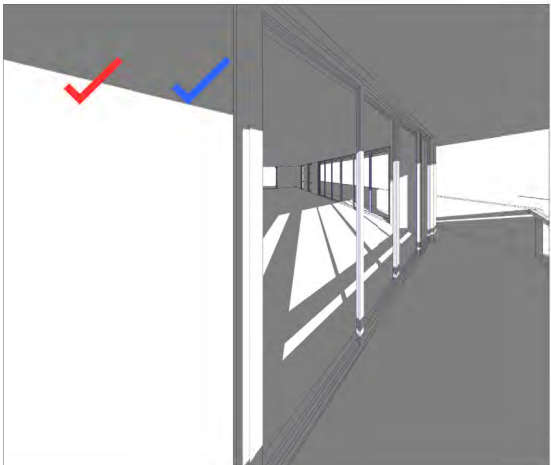
1230pm



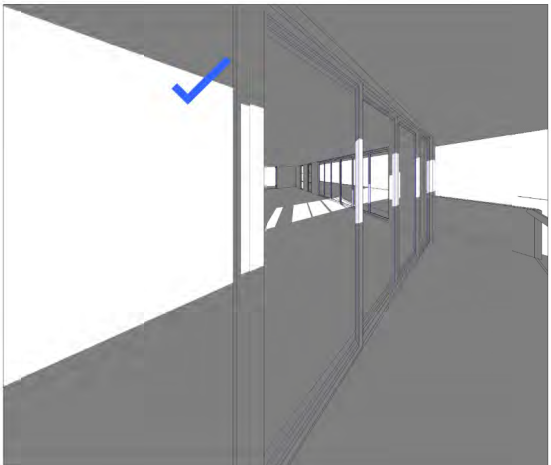
1pm



130pm



2pm



225pm

## SOLAR ACCESS WINTER SOLSTICE



BALCONY 3hrs 30mins



LIVING 3hrs

NOT FOR CONSTRUCTION

Y	13.03.18	ADDITIONAL INFORMATION	SJ	ADM
X	09.02.18	FOR APPROVAL	djm	ADM
ISSUE	DATE	DESCRIPTION	initials	chkd
sign			date	
These drawings are not to be scaled. Figured dimensions shall be used in all cases.				

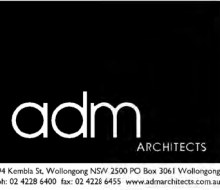
COPYRIGHT - These drawings remain the exclusive copyright of ADM Architects. Reproductions in any form whether electronic, digital or otherwise shall not be allowed except by express permission granted in writing by ADM Architects.

FIGURED DIMENSIONS - These drawings are not to be scaled. Figured dimensions shall be used in all cases.

DISCREPANCIES IN DIMENSIONS/POSITIONS/LOCATIONS/FINISHES The Contractor is to verify any dimensional, location or finish discrepancy with ADM Architects prior to any physical construction or setting out so that ADM Architects is given the opportunity to resolve potential discrepancies or conflicts in sufficient time without causing abortive work. The Contractor shall be responsible for notifying ADM Architects of any such discrepancy or conflict that may arise on site.

COORDINATION OF WORKS - These drawings are to be read in conjunction with the full set of consultant's drawings, specifications, reports and DA conditions.

NOMINATED ARCHITECT - The nominated Architect for ADM Projects (Australia) Pty Ltd T/A ADM Architects is Angelo Di Martino AIB No.7608



**NICOLAS  
DAOUD &  
CO PTY. Ltd**

Project  
DEMOLITION OF EXISTING STRUCTURES AND CONSTRUCTION  
OF A MIXED USE DEVELOPMENT COMPRISING RESIDENTIAL  
APARTMENTS ABOVE RETAIL SHOPS, COMMERCIAL TENANCIES  
AND ASSOCIATED CARPARKING AREAS  
at  
LOT 1, DP50193, LOT 3, DPI 104857, PT.1, DP506764, LOTS 100 & 200,  
DPI017091,  
AKUNA & TERRALONG STREET  
KIAMA

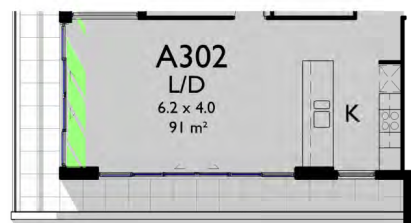
scale	NTS
date	MARCH 2018
drawn	djm SJ chkd ADM
drawing	DEVELOPMENT APPLICATION
Project No.	SOLAR ACCESS - A302
2016-19(a)	Drawng No. A-409b
issue	Y





1125am

SHADED AREA = 1.0m<sup>2</sup>



1130am

SHADED AREA = 1.2m<sup>2</sup>



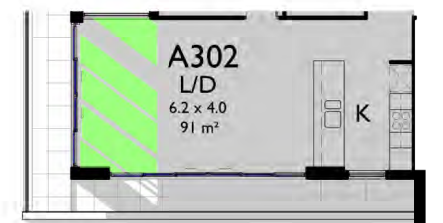
12pm

SHADED AREA = 2.6m<sup>2</sup>



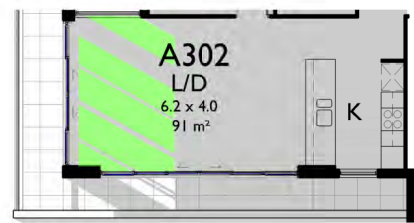
1230pm

SHADED AREA = 4.3m<sup>2</sup>



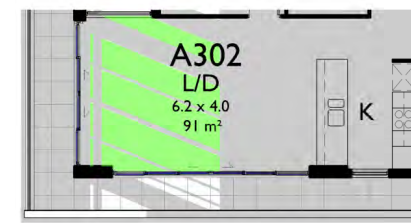
1pm

SHADED AREA = 6.1m<sup>2</sup>



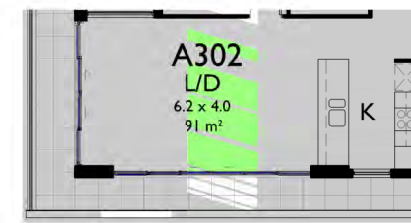
130pm

SHADED AREA = 7.8m<sup>2</sup>



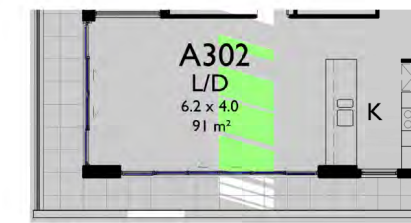
2pm

SHADED AREA = 9.6m<sup>2</sup>



225pm

SHADED AREA = 5.0m<sup>2</sup>



230pm

SHADED AREA = 3.9m<sup>2</sup>

## SOLAR ACCESS PLANS WINTER SOLSTICE

Y	13.03.18	ADDITIONAL INFORMATION	SJ	ADM
X	09.02.18	FOR APPROVAL	djm	ADM
ISSUE	DATE	DESCRIPTION	initials	chkd
sign		date		
⚠ These drawings are not to be scaled. Figured dimensions shall be used in all cases.				

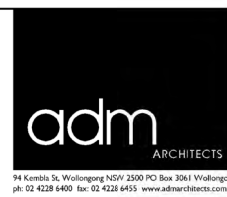
COPYRIGHT - These drawings remain the exclusive copyright of ADM Architects. Reproductions in any form whether electronic, digital or otherwise shall not be allowed except by express permission granted in writing by ADM Architects.

FIGURED DIMENSIONS - These drawings are not to be scaled. Figured dimensions shall be used in all cases.

DISCREPANCIES IN DIMENSIONS/POSITIONS/LOCATIONS/FINISHES The Contractor is to verify any dimensional, location or finish discrepancy with ADM Architects prior to any physical construction or setting out so that ADM Architects is given the opportunity to resolve potential discrepancies or conflicts in sufficient time without causing abortive work. The Contractor shall be responsible for notifying ADM Architects of any such discrepancy or conflict that may arise on site.

COORDINATION OF WORKS - These drawings are to be read in conjunction with the full set of consultant's drawings, specifications, reports and DA conditions.

NOMINATED ARCHITECT - The nominated Architect for ADM Projects (Australia) Pty Ltd T/A ADM Architects is Angelo Di Martino AIB No.7608



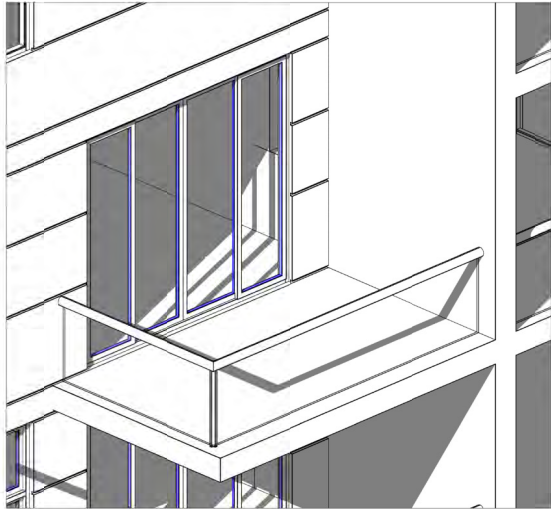
NICOLAS  
DAOUD &  
CO PTY. Ltd

Project  
DEMOLITION OF EXISTING STRUCTURES AND CONSTRUCTION  
OF A MIXED USE DEVELOPMENT COMPRISING RESIDENTIAL  
APARTMENTS ABOVE RETAIL SHOPS, COMMERCIAL TENANCIES  
AND ASSOCIATED CARPARKING AREAS

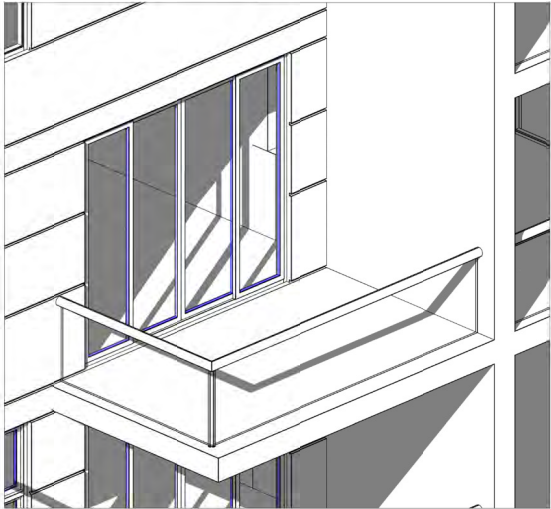
at  
LOT 1, DP50193, LOT 3, DP1104857, PT.1, DP506764, LOTS 100 & 200,  
DP1017091,  
AKUNA & TERRALONG STREET  
KIAMA

scale	NTS
date	MARCH 2018
drawn	djm SJ chkd ADM
drawing	DEVELOPMENT APPLICATION
Project No.	SOLAR ACCESS - A302
2016-19(a)	Project No.
A-409c	Drawing No.
Y	issue

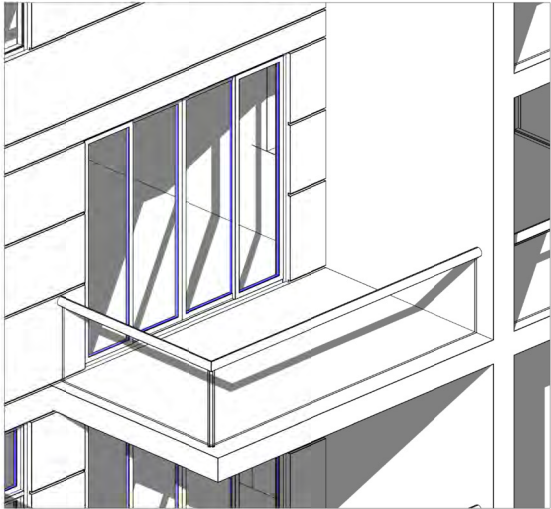




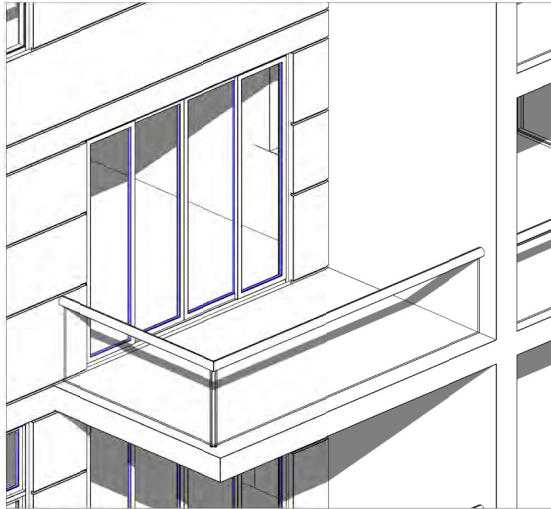
11am



1130am



12pm



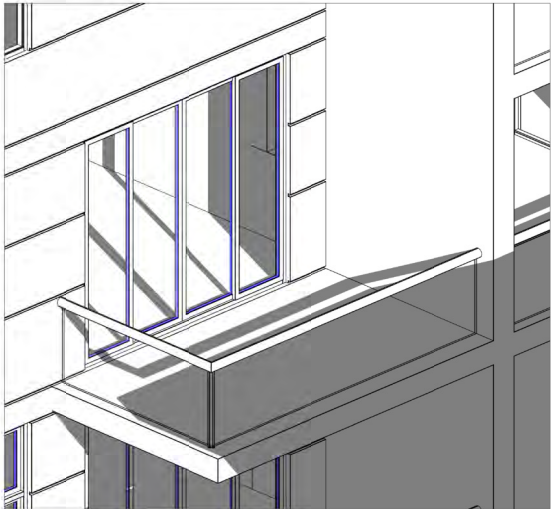
1230pm



1pm



130pm



2pm

SOLAR ACCESS DIAGRAM  
WINTER SOLSTICE

Y	13.03.18	ADDITIONAL INFORMATION	SJ	ADM
X	09.02.18	FOR APPROVAL	djm	ADM
ISSUE	DATE	DESCRIPTION	initials	chkd
sign			date	
These drawings are not to be scaled. Figured dimensions shall be used in all cases.				

COPYRIGHT - These drawings remain the exclusive copyright of ADM Architects. Reproductions in any form whether electronic, digital or otherwise shall not be allowed except by express permission granted in writing by ADM Architects.

FIGURED DIMENSIONS - These drawings are not to be scaled. Figured dimensions shall be used in all cases.

DISCREPANCIES IN DIMENSIONS/POSITIONS/LOCATIONS/FINISHES The Contractor is to verify any dimensional, location or finish discrepancy with ADM Architects prior to any physical construction or setting out so that ADM Architects is given the opportunity to resolve potential discrepancies or conflicts in sufficient time without causing abortive work. The Contractor shall be responsible for notifying ADM Architects of any such discrepancy or conflict that may arise on site.

COORDINATION OF WORKS - These drawings are to be read in conjunction with the full set of consultant's drawings, specifications, reports and DA conditions.

NOMINATED ARCHITECT - The nominated Architect for ADM Projects (Australia) Pty Ltd T/A ADM Architects is Angelo Di Martino AIB No.7608



NICOLAS  
DAOUD &  
CO PTY. Ltd

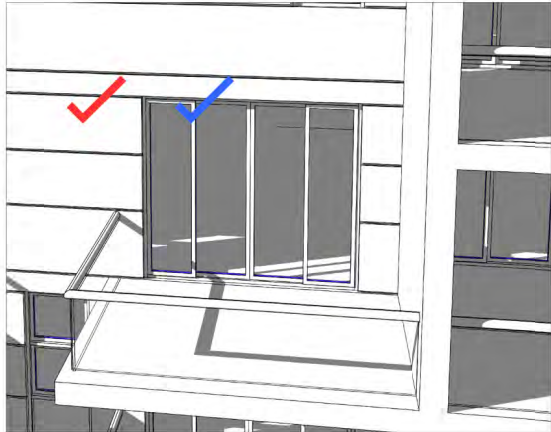
Project  
DEMOLITION OF EXISTING STRUCTURES AND CONSTRUCTION  
OF A MIXED USE DEVELOPMENT COMPRISING RESIDENTIAL  
APARTMENTS ABOVE RETAIL SHOPS, COMMERCIAL TENANCIES  
AND ASSOCIATED CARPARKING AREAS

at  
LOT 1, DP50193, LOT 3, DP1104857, PT.1, DP506764, LOTS 100 & 200,  
DP1017091,  
AKUNA & TERRALONG STREET  
KIAMA

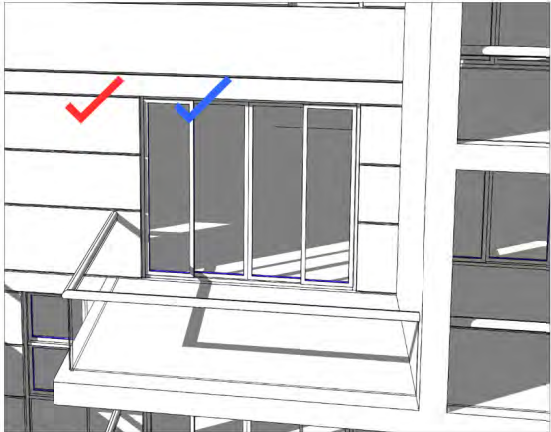
scale	NTS
date	MARCH 2018
drawn	djm SJ chkd ADM
drawing	DEVELOPMENT APPLICATION
Project No.	SOLAR ACCESS - A303
2016-19(a)	2016-19(a)
Drawing No.	A-410a
issue	Y

NOT FOR CONSTRUCTION

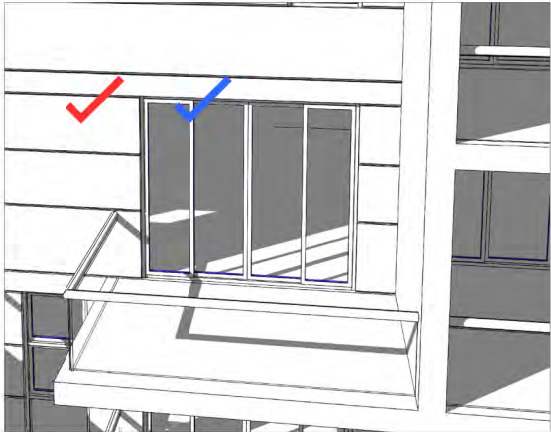




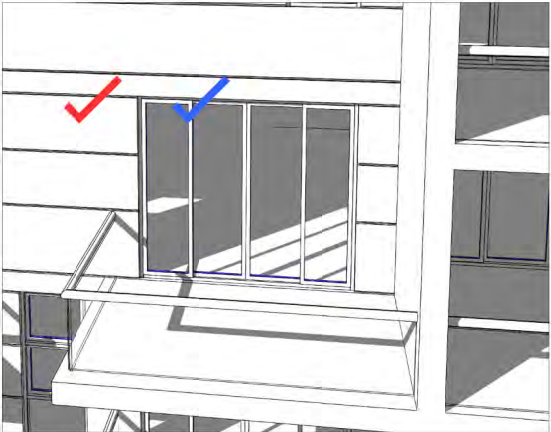
11am



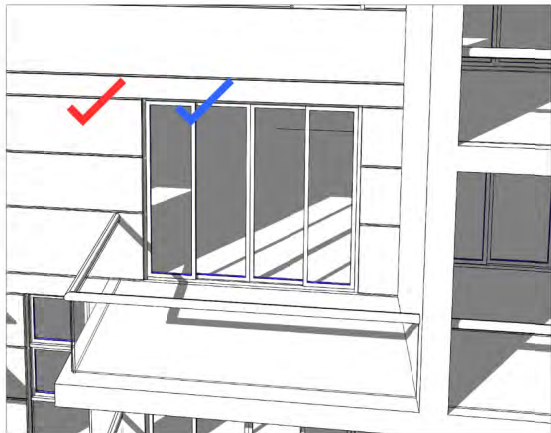
1130am



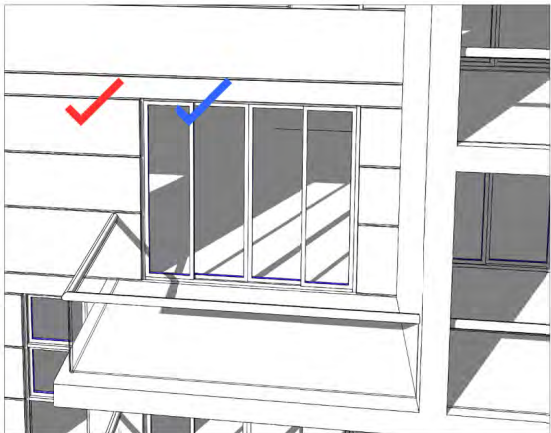
12pm



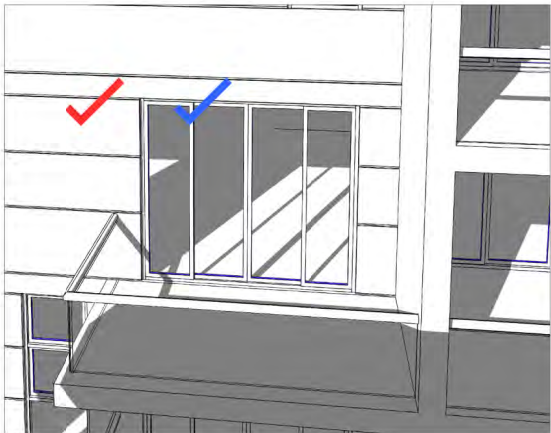
1230pm



1pm



130pm



2pm

## SOLAR ACCESS WINTER SOLSTICE



BALCONY 3hrs



LIVING 3hrs

Y	13.03.18	ADDITIONAL INFORMATION FOR APPROVAL	SJ	ADM
X	09.02.18		djm	ADM
ISSUE	DATE	DESCRIPTION	initials	chkd
sign			date	
These drawings are not to be scaled. Figured dimensions shall be used in all cases.				

COPYRIGHT - These drawings remain the exclusive copyright of ADM Architects. Reproductions in any form whether electronic, digital or otherwise shall not be allowed except by express permission granted in writing by ADM Architects.

FIGURED DIMENSIONS - These drawings are not to be scaled. Figured dimensions shall be used in all cases.

DISCREPANCIES IN DIMENSIONS/POSITIONS/LOCATIONS/FINISHES The Contractor is to verify any dimensional, location or finish discrepancy with ADM Architects prior to any physical construction or setting out so that ADM Architects is given the opportunity to resolve potential discrepancies or conflicts in sufficient time without causing abortive work. The Contractor shall be responsible for notifying ADM Architects of any such discrepancy or conflict that may arise on site.

COORDINATION OF WORKS - These drawings are to be read in conjunction with the full set of consultant's drawings, specifications, reports and DA conditions.

NOMINATED ARCHITECT- The nominated Architect for ADM Projects (Australia) Pty Ltd T/A ADM Architects is Angelo Di Martino AIB No.7608



NICOLAS  
DAOUD &  
CO PTY. Ltd

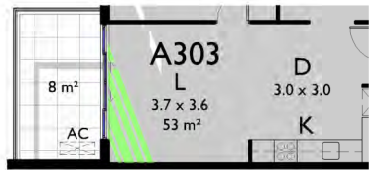
Project  
DEMOLITION OF EXISTING STRUCTURES AND CONSTRUCTION  
OF A MIXED USE DEVELOPMENT COMPRISING RESIDENTIAL  
APARTMENTS ABOVE RETAIL SHOPS, COMMERCIAL TENANCIES  
AND ASSOCIATED CARPARKING AREAS

at  
LOT 1, DP50193, LOT 3, DP1104857, PT.1, DP506764, LOTS 100 & 200,  
DP1017091,  
AKUNA & TERRALONG STREET  
KIAMA

scale	NTS
date	MARCH 2018
drawn	djm SJ chkd ADM
drawing	DEVELOPMENT APPLICATION
Project No.	SOLAR ACCESS - A303
2016-19(a)	2016-19(a)
Drawing No.	A-410b
issue	Y

NOT FOR CONSTRUCTION

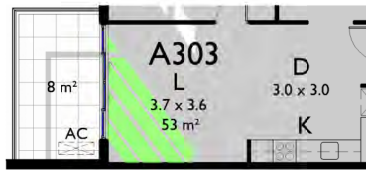




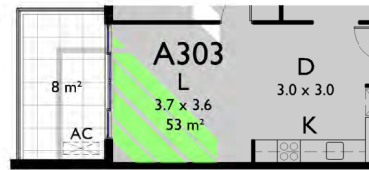
11am  
SHADED AREA = 1.3m²



1130am  
SHADED AREA = 2.3m²



12pm  
SHADED AREA = 3.3m²



1230pm  
SHADED AREA = 4.5m²



1pm  
SHADED AREA = 5.9m²



130pm  
SHADED AREA = 7.5m²



2pm  
SHADED AREA = 9.4m²

## SOLAR ACCESS PLANS WINTER SOLSTICE

Y	13.03.18	ADDITIONAL INFORMATION FOR APPROVAL	SJ	ADM
X	09.02.18		djm	ADM
ISSUE	DATE	DESCRIPTION	initials	chkd
sign			date	
These drawings are not to be scaled. Figured dimensions shall be used in all cases.				

COPYRIGHT - These drawings remain the exclusive copyright of ADM Architects. Reproductions in any form whether electronic, digital or otherwise shall not be allowed except by express permission granted in writing by ADM Architects.

FIGURED DIMENSIONS - These drawings are not to be scaled. Figured dimensions shall be used in all cases.

DISCREPANCIES IN DIMENSIONS/POSITIONS/LOCATIONS/FINISHES The Contractor is to verify any dimensional, location or finish discrepancy with ADM Architects prior to any physical construction or setting out so that ADM Architects is given the opportunity to resolve potential discrepancies or conflicts in sufficient time without causing abortive work. The Contractor shall be responsible for notifying ADM Architects of any such discrepancy or conflict that may arise on site.

COORDINATION OF WORKS - These drawings are to be read in conjunction with the full set of consultant's drawings, specifications, reports and DA conditions.

NOMINATED ARCHITECT - The nominated Architect for ADM Projects (Australia) Pty Ltd T/A ADM Architects is Angelo Di Martino AIB No.7608



NICOLAS  
DAOUD &  
CO PTY. Ltd

Project  
DEMOLITION OF EXISTING STRUCTURES AND CONSTRUCTION  
OF A MIXED USE DEVELOPMENT COMPRISING RESIDENTIAL  
APARTMENTS ABOVE RETAIL SHOPS, COMMERCIAL TENANCIES  
AND ASSOCIATED CARPARKING AREAS

at  
LOT 1, DP50193, LOT 3, DPI 104857, PT.1, DP506764, LOTS 100 & 200,  
DPI017091,  
AKUNA & TERRALONG STREET  
KIAMA

scale	NTS
date	MARCH 2018
drawn	djm SJ chkd ADM
drawing	DEVELOPMENT APPLICATION
Project No.	SOLAR ACCESS - A303
2016-19(a)	2016-19(a)
Drawing No.	A-410c
issue	Y

NOT FOR CONSTRUCTION